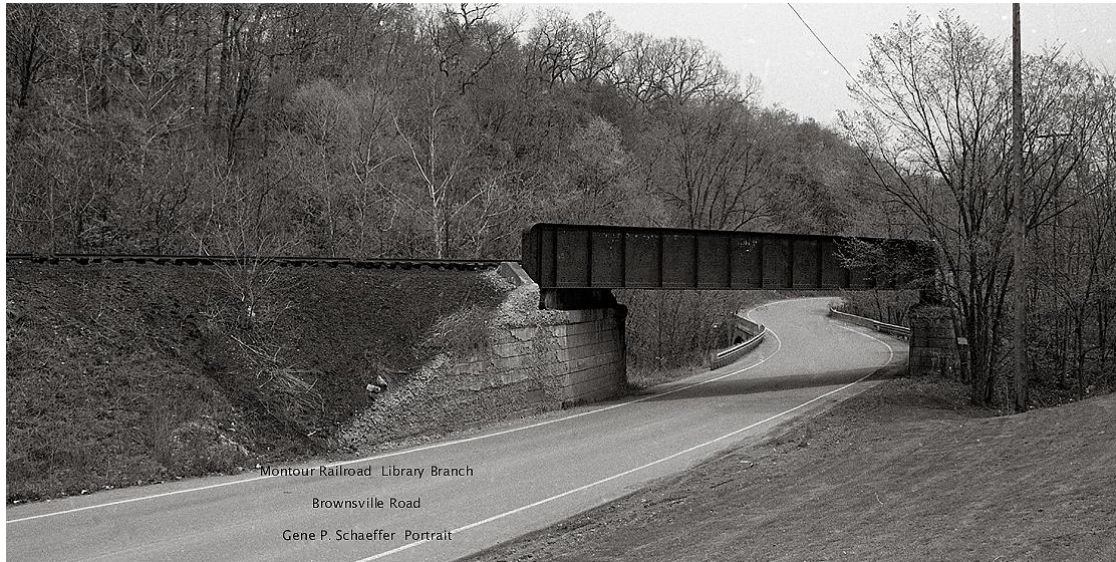


Library Branch MP 3.1 76' Through Plate Girder Concrete Deck

Trail MP 36.9 Over Brownsville Road

Built 1929 Builder's Plate removed

Looking east on Brownsville Road with rails in place, circa. 1979. Skew construction angles bridge over road. The last train on this section of the Library Branch ran in 1975.



Gene P. Schaeffer photo

View in 2011. Note deteriorating concrete on abutments. H-beam supports have been added at the four corners. Builder's plate has been removed.



Bryan Seip photos

Skew construction evident in this view looking east along Brownsville Road. Golf driving range is to the right. Bridge was built during 1929 extension of the Montour Railroad's Library Branch to Snowden.



View looking east shows angled skew construction.



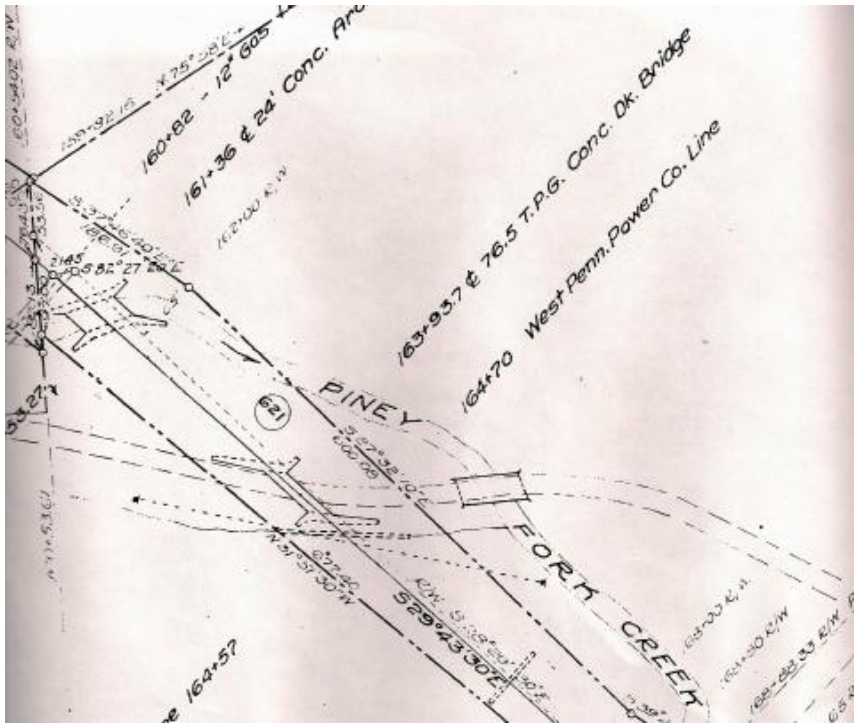
This view looks west across bridge. Both views show concrete deck on bridge.



Satellite view shows bridge at center. Golf driving range is at lower center. Brownsville Road runs across picture with Stewart Road intersection at upper left.

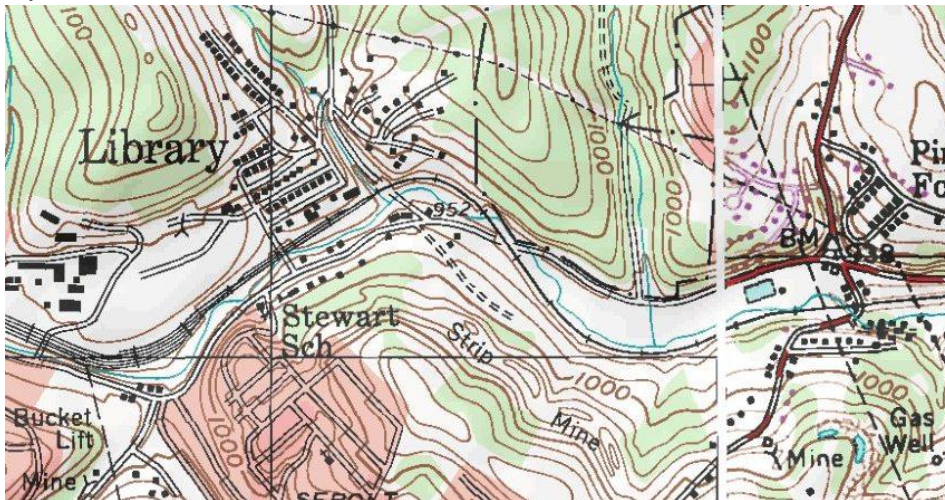


Valuation plan shows bridge in lower left quadrant. Brownsville Road is dashed lines running across frame and Piney Fork Creek is indicated.



Courtesy Greg Corcoran

Topo map shows bridge at center. Brownsville Road, Montour Railroad and Piney Fork Creek run across frame, with Brownsville Road Ext. near right edge. Stewart Road is at top to left of center. Cardox and Sebolt Roads are at lower left.



Courtesy Bob Ciminel / USGS

Compiled by Montour Railroad Historical Society members.