

Library Branch MP 4.0 20' Concrete Slab

Trail MP 37.8 Over Catfish Run adjacent to South Park Water Treatment Plant

No dates evident in concrete

View looking west from parking area at Water Treatment Plant.



Bryan Seip photos

Looking south with spalling evident in concrete & no date visible.



Looking north toward Piney Fork Road also shows severe spalling in concrete.



Looking east toward parking area and entrance to Water Treatment Plant.

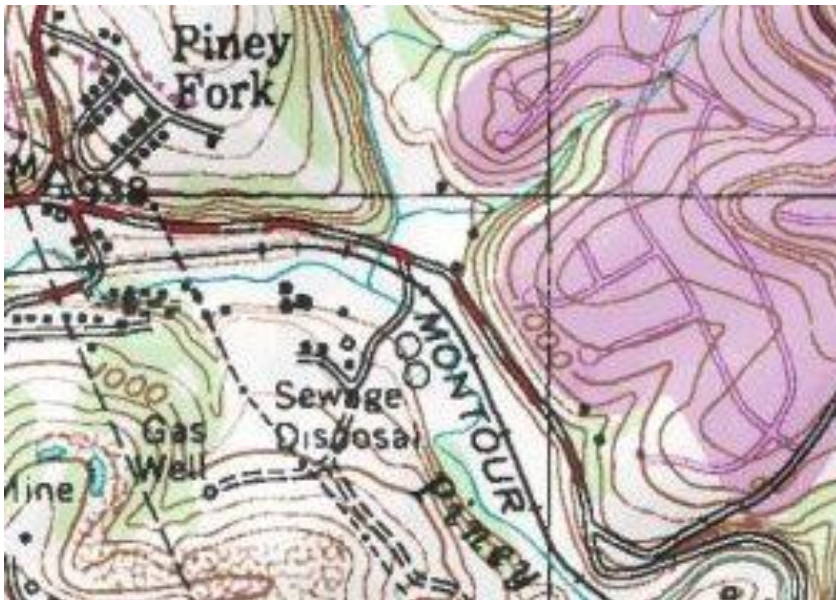


Satellite view shows bridge at center, just to top left of parking area. Piney Fork Road runs from left to bottom right, with Water Treatment Plant at lower left.



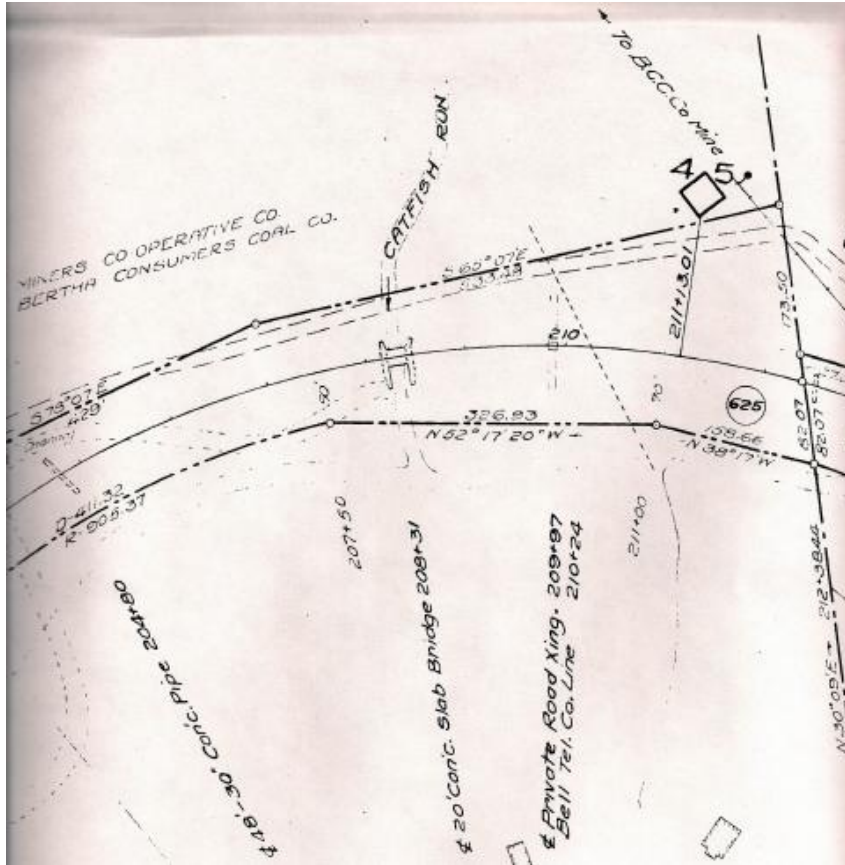
Google Maps

Topo map shows bridge at center, just to left of entrance into Sewage Disposal plant. Piney Fork Road runs from middle left intersection to lower right. Piney Fork Creek parallels Montour Railroad with Catfish Run flowing from top center, under road and Montour bridge, to center.



Courtesy Bob Ciminel / USGS

Valuation plan shows bridge at center, over Catfish Run. Piney Fork Creek runs across center of frame. Piney Fork Road is dashed lines above Railroad center line. Note RR Milepost 4 indicated at top right. North is at top of frame.



Courtesy Greg Corcoran

Compiled by Montour Railroad Historical Society members.