

Library Branch MP 4.3 47' Deck Plate Girder Timber Deck

Trail MP 38.1 Over Piney Fork Creek at Gould

Built by Pennsylvania Railroad ca. 1905-15 No Builder's Plate – no dates evident in abutments

View looking south



2011 photos Bryan Seip

Bridge shown in 1974, looking east toward Triphammer Road cut & overhead bridge. After heavy rains soaked the area, note the stream almost touching the bottom of the bridge. Railroad operations on this section ended in 1975.



Tim Sposato photo

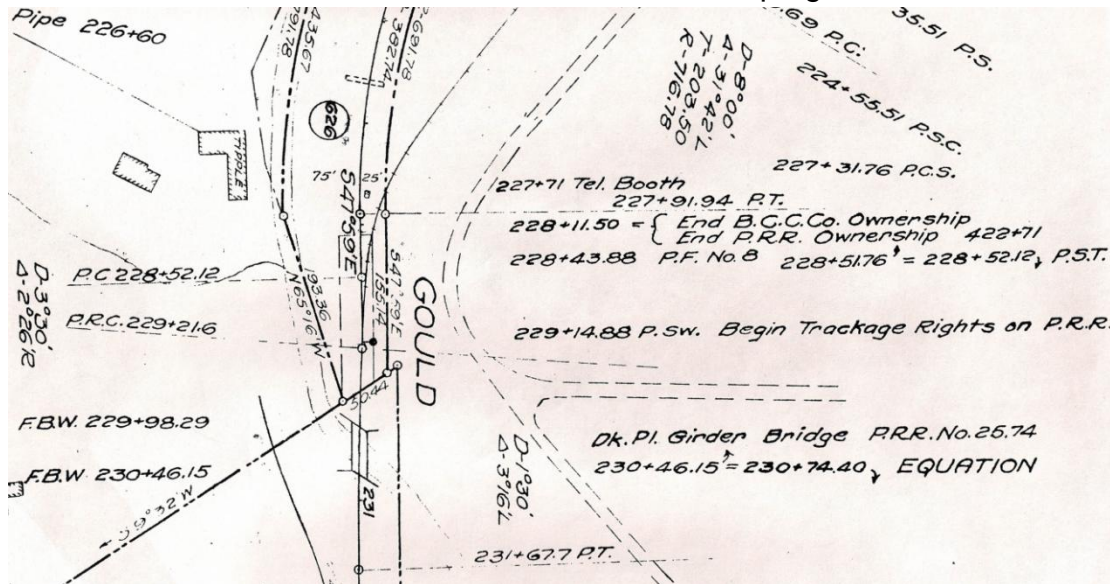
37 years later, looking east toward parking area & Triphammer Road. The overhead road bridge was removed and the cut filled in 1987, after abandonment of the railroad.



Looking north towards Piney Fork Road. Safety railings were added during Montour Trail construction.



Valuation plan shows bridge at lower left. Notation shows bridge as P.R.R. No. 25.74. Dashed road curving through center is Piney Fork Road. Tipple marked in upper left was the Knothole Mine. This location, where Montour, PRR and Bertha Consumers Coal Co. tracks met was named Gould. North is at top right corner of frame.



Courtesy Greg Corcoran

Satellite view shows bridge at left center. Piney Fork Road curves across picture in horseshoe. Trihammer Road runs from left center to intersection at right of center. Trail runs from top left to center. Railroad continued diagonally to lower right. Gob pile from Knothole Mine can be seen at left center edge of frame.



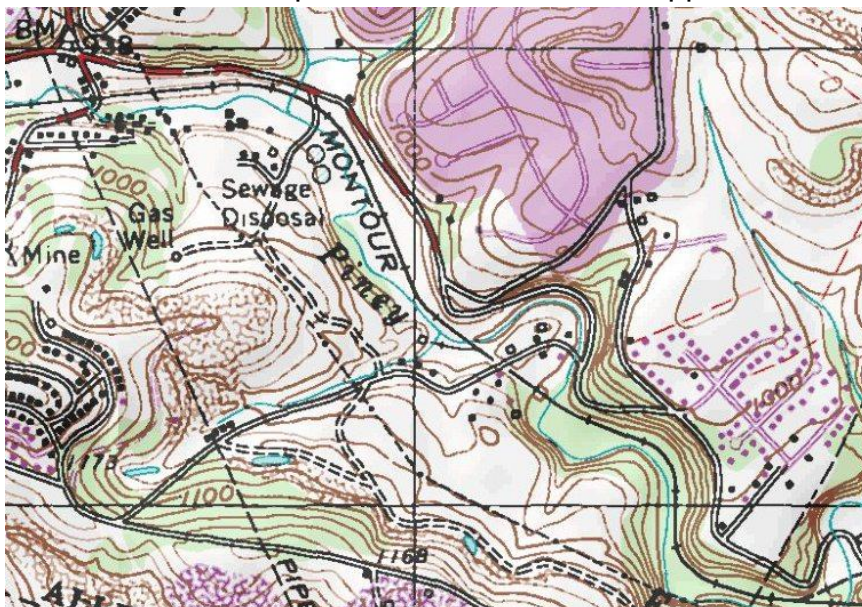
Google Images

Aerial photo from 1939 shows bridge at center. Coal hoppers below bridge are lined up at the Knothole Mine tipple. Triphammer Road runs across lower frame. Montour Railroad runs top left to lower right.



Courtesy Penn Pilot

Topo map shows bridge at center. Piney Fork Road runs top left to lower right. Triphammer Road runs from right of center to lower left intersection. The Montour Railroad followed Piney Fork Creek down the valley except through a cut at Triphammer Road. The cut was filled in when the roadway bridge was removed after abandonment of the railroad. RR spur to the Knothole Mine tipple can be seen at the bridge location.



Courtesy Bob Ciminel / USGS