

Library Branch MP 5.2 35' Deck Plate Girder Concrete Deck

Trail MP 39.0 Over Piney Fork Creek at Penmont

Built 1929 Builder's Plate Removed Date stamped in concrete abutments

View looking south from construction company yard.



Bryan Seip photos

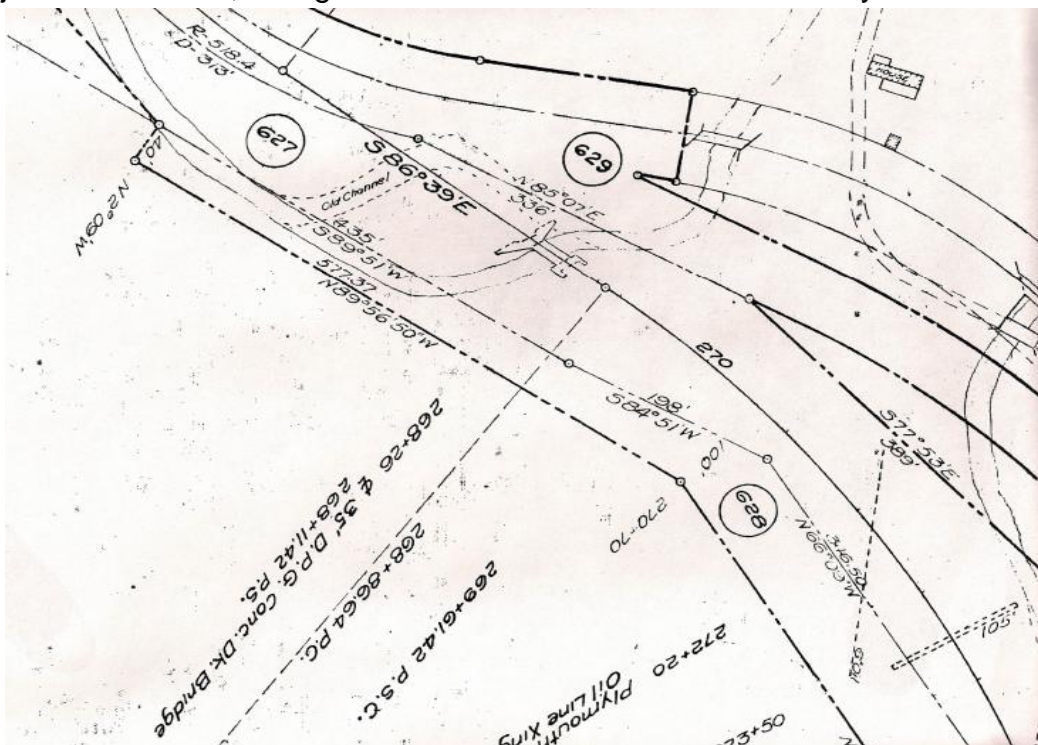
1929 date stamped in concrete of both abutments. West abutment on left, east on right.



View looking east, toward Snowden, shows concrete deck on bridge.



Valuation plan shows bridge near center. Piney Fork Road curves through upper right. Note relocated channel of Piney Fork Creek to left of bridge. Pennsylvania RR Peters Creek Branch runs from upper left to right center (abandoned in 1962). This junction, just out of frame, was given the name Pennmont – for Pennsylvania and Montour.

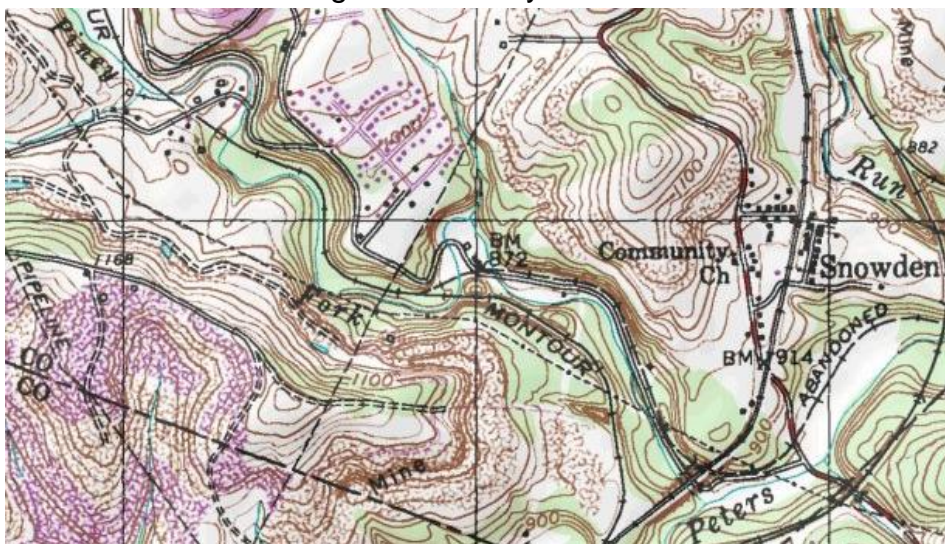


Courtesy Greg Corcoran

Satellite view has bridge at center in shadows, at lower right corner of Construction Co. lot. Piney Fork Road runs across top of picture. Penmont junction was at center left. PRR Peters Creek Branch ran through the middle of the construction company lot.



Topo map shows bridge near center, just to left of "Montour". Piney Fork Road, Piney Fork Creek and Montour Railroad run along valley from top left to lower right. PRR branch is shown running next to Piney Fork Road & marked "abandoned" at right.



Courtesy Bob Ciminel / USGS

Compiled by Montour Railroad Historical Society members