

MP 16.4 45' Deck Plate Girder Timber Deck Bridge removed & replaced

Mile 15.4 Trail MP 14.4 Over Rt. 980 at Shaw Mine

Over Rt. 980 near Quicksilver Road, now replaced by steel truss Trail bridge. Original abutments were placed along edge of roadway, creating a narrow underpass.



2010 photos Bryan Seip

This picture from May, 1979 shows a coal train crossing the original bridge, which was built in 1913. Note the low clearance sign and the abutments right at the edge of the roadway. Clearance problems for trucks caused removal of the bridge after abandonment of the railroad.



Gene P. Schaeffer photo

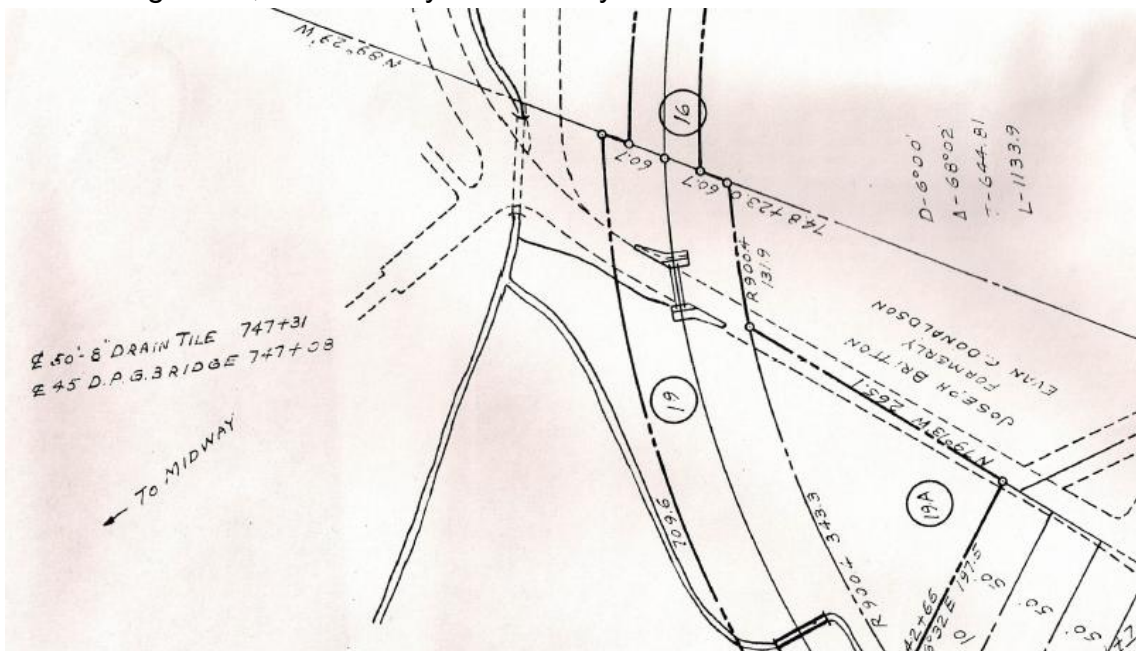
In this view, the original bridge is being sandblasted, prior to repainting in 1979. Safety walkways and fencing on the bridge are designed to keep any coal falling off of loaded hopper cars from falling onto the roadway.



TJ SPOSATO IMAGE

Photo courtesy Tim Sposato

Valuation plan shows original bridge as a 45 foot Deck Plate Girder. Note wing walls of abutments at edge of roadway. Bridge crosses Rt. 980, with Quicksilver Road intersecting at left, indicated by "To Midway"



Courtesy Greg Corcoran

Topo map shows bridge at bottom center with Quicksilver Road intersection. Red dashed road is Rt. 980. Lower right shows Montour #9 patch houses along Rt. 980. Strip Mine noted in upper left is on Geary Farm. Donaldson Road is at upper right.

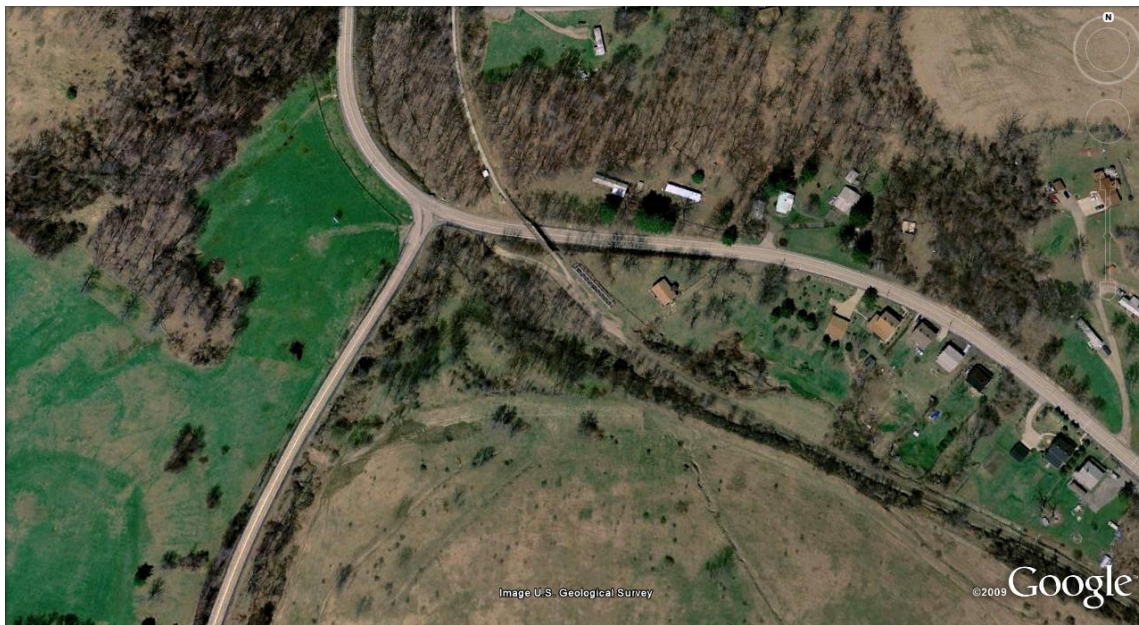


Courtesy Bob Ciminell

View looking westbound through Trail bridge



Satellite view shows bridge above center, with Rt 980 running from top to lower right and patch houses from Montour Mine #9 at right side of frame. Quicksilver Road runs to bottom left.



Compiled by Montour Railroad Historical Society members