

**MP 2.3 65' Through Plate Girder Adjacent to Hassam Road crossing at Ewings**

**Mile 2.3 Trail MP 1.3**

Poured concrete deck Builder's Plate removed

Looking south (RR east) from Hassam Road Crossing in May, 1944. Note farmhouse in background.



Gene P. Schaeffer Collection

Same view in 2010 – Farmhouse is gone. Land to left of trail is now Forest Grove Sportsman's Association.



2010 Photos Bryan Seip

1930 in concrete of both abutments. This bridge was installed during one of the realignment/upgrade projects on the main line.



Looking west from Hassam Road



Looking east



This satellite view shows the bridge over Montour Run near the Hassam Road crossing. Trail parking area and Sanitation Plant are on opposite side of road toward top of picture.

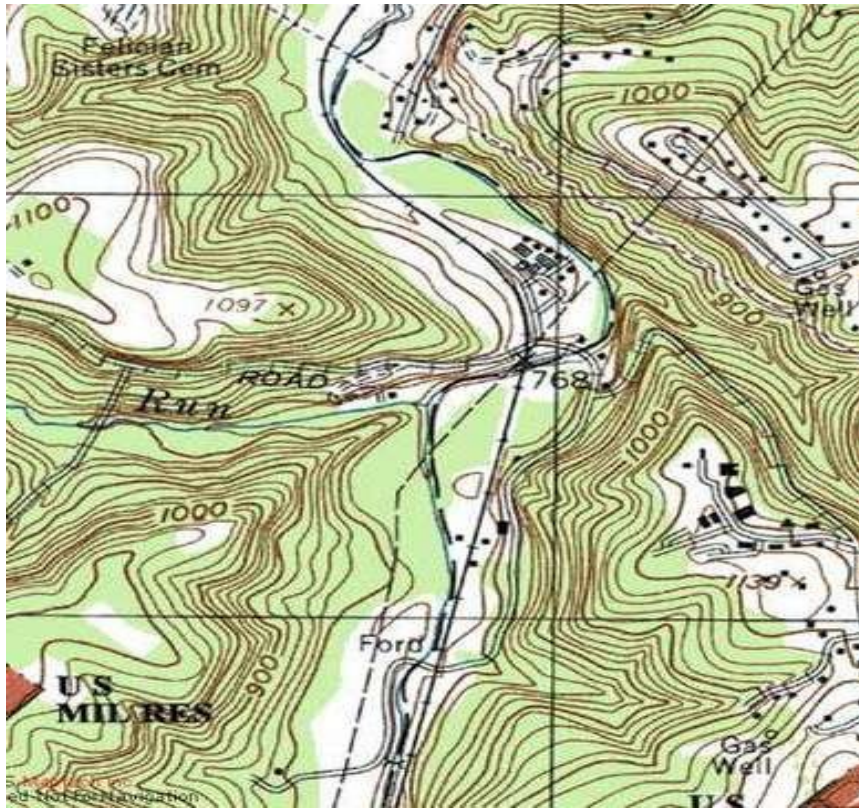


This view from 1967 shows the bridge at center with farm house at bottom center. Hassam Road crosses at center of picture. Sanitation plant has not been built yet.



Courtesy Penn Pilot

This topo map shows the railroad following the Montour Run valley. The bridge is at center. The farmhouse shows as a black rectangle on the hillside at lower center.



Courtesy Bob Ciminel

Compiled by Montour Railroad Historical Society