

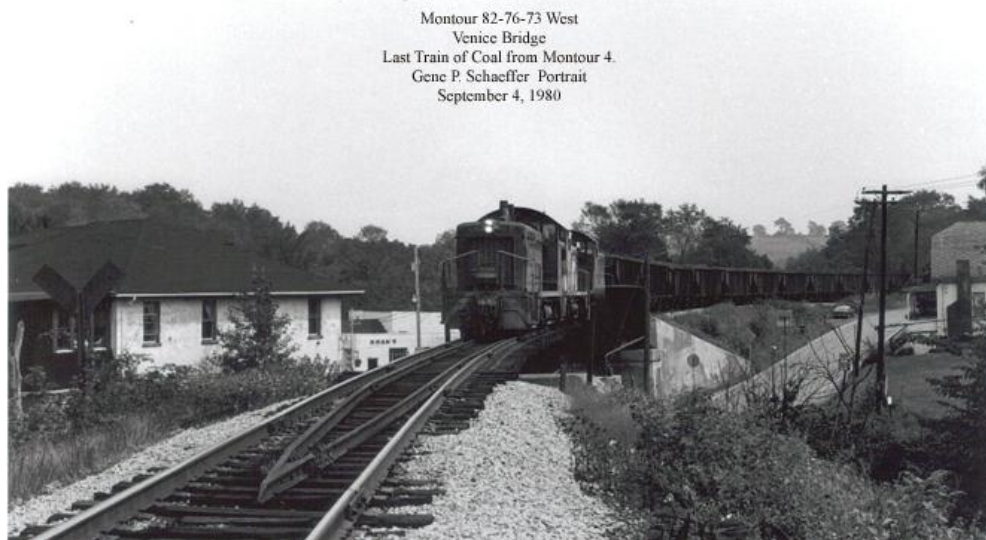
**MP 24.0 190' in 3 Spans = 60' + 40' Deck Plate Girder + 90' Through Plate Girder**

**Mile 22.9 Trail MP 21.9 Timber Deck Over Rts. 50 & 980 at Venice**

Builder's Plate: American Bridge Co. of New York U.S.A. 1913

2 Spans Removed in 2001

These two views looking south (RR East) – Rt 980 is at right of train.

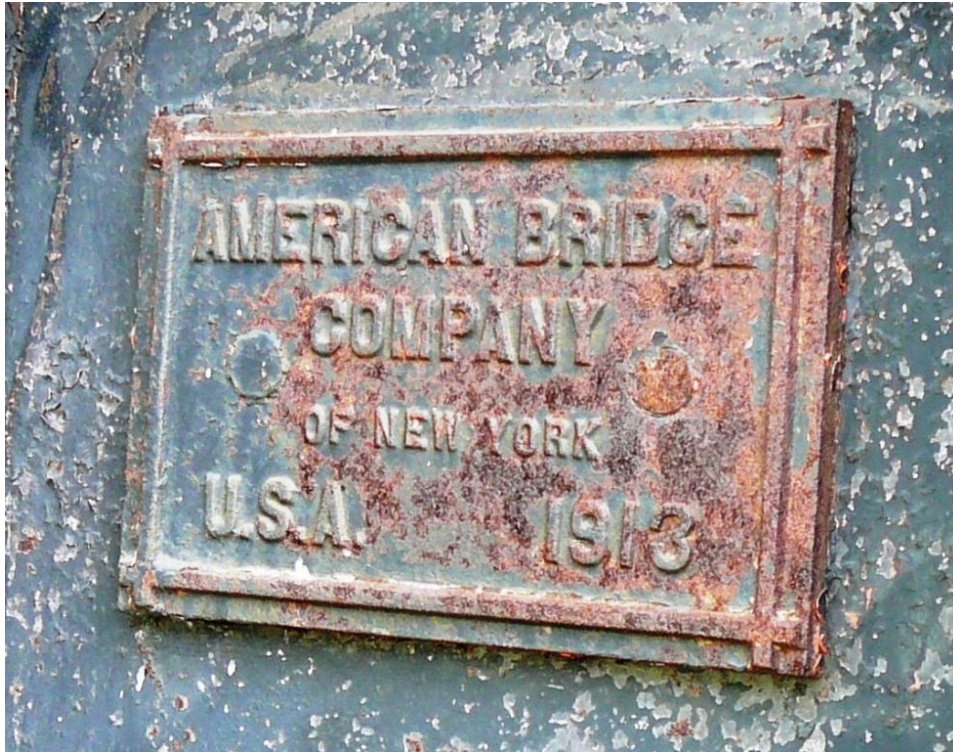


Gene P. Schaeffer photos

1986 after abandonment of the railroad – MP 24 at right on edge of abutment.



Builder's Plate: American Bridge Co. of New York U.S.A. 1913



Bryan Seip photo

Montour RR Hi-Rail truck, pushing a maintenance cart equipped with a hand cranked crane, approaches the bridge in 1978.



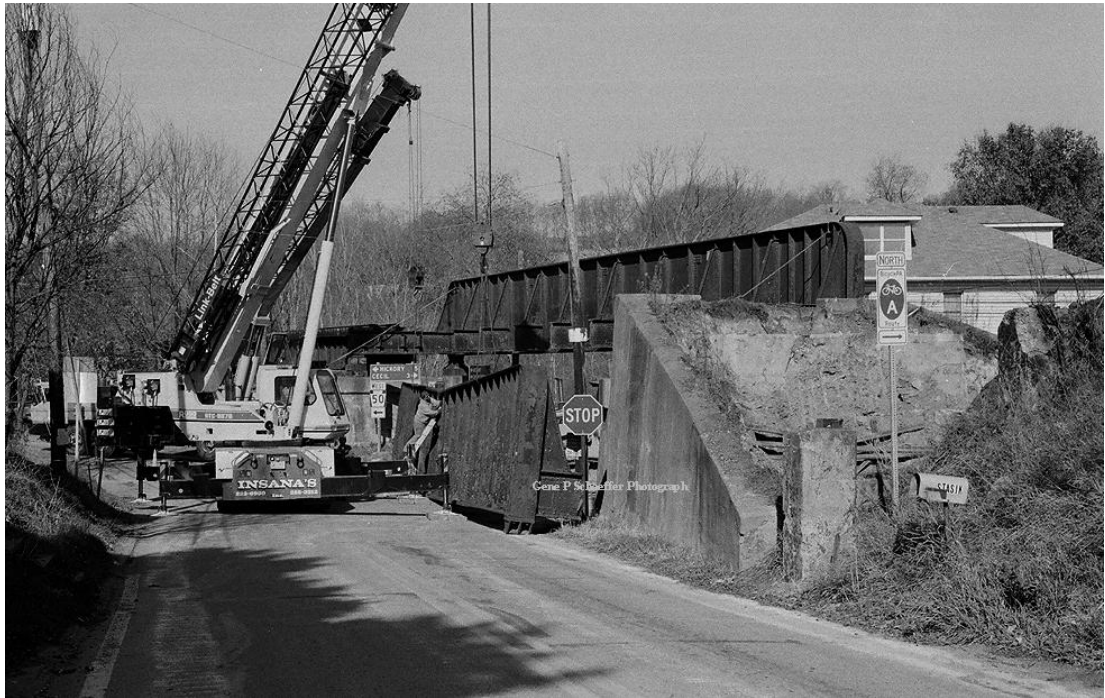
Tim Sposato photo

Due to low clearance causing trucks to strike the bridge, PennDot began removal of the span over the roadway in 1993, but work was halted by the Montour Trail Council, pending final disposition of the bridge. This picture shows the guide rails have been removed, with a deck section and a steel cross member at the far end of the bridge also having been removed prior to work stoppage.



Tim Sposato photo

Final bridge removal by PennDot occurred in October, 2001. This view is looking north along Rt. 980. Two spans, plus the concrete abutment and the pier at the edge of Rt. 50 were removed to increase vision and traffic safety.



Gene P. Schaeffer photo

In 2006, after removal of spans over Rt. 50, only this span over Miller's Run remained.



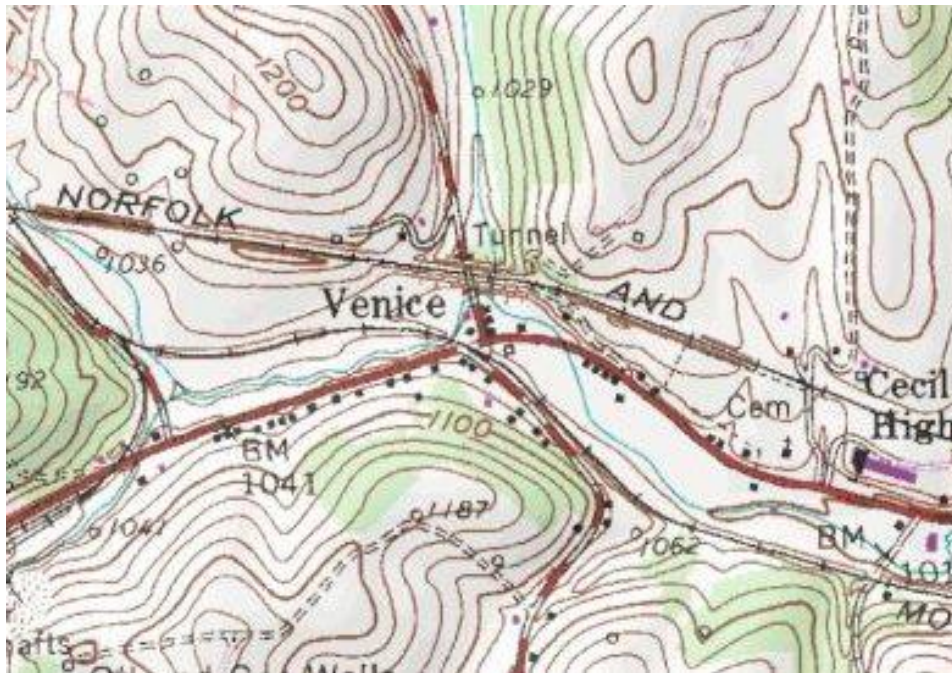
Gene P. Schaeffer photo

Satellite view of Rts. 50 & 980 intersection. Montour Trail runs left center to bottom right, Rt. 50 left to right, and Rt. 980 from top center jogs through intersection to bottom center. W&LE RR crosses over Rt. 980 at top of frame. Engineering for a replacement bridge waits until completion of a PennDot project to realign Rt. 980 through the intersection.



Google Images

Topo map shows bridge location at center. Norfolk & Western RR markings are current W&LE. Rt. 50 is in solid red, Rt. 980 in dashed red/white.



Google/USGS

Remaining span over Miller's Run in use by Montour Trail Council, with stairs bringing Trail down to ground level and grade crossing of Rts. 50 & 980.



Bryan Seip photo

Compiled by Montour Railroad Historic Society members