

MP 29.1 14' Concrete Arch

Mile 28.0 Trail 27.0 Over McPherson Creek at Oriole Drive in Hendersonville

From Oriole Drive on south side – 1913 in concrete at top of arch



Bryan Seip photos

From Cecil-Henderson Road (north side) – 1913 in concrete at top of arch

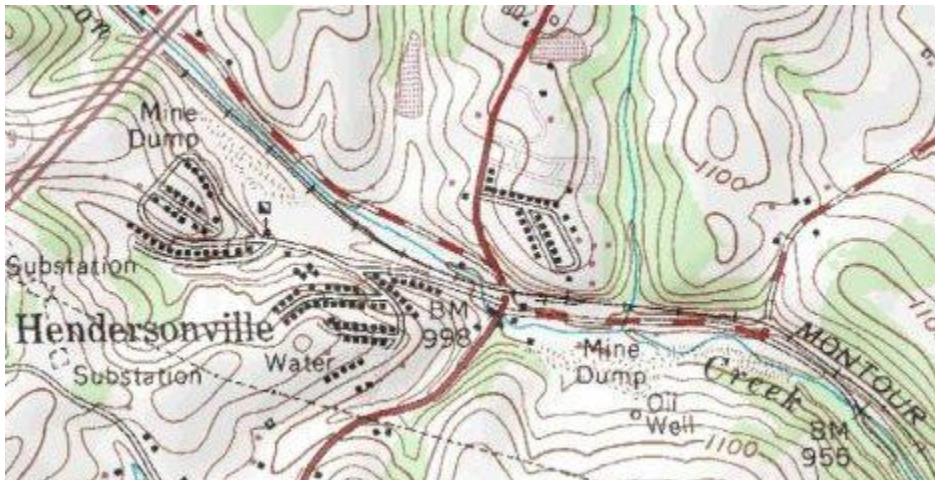


1939 aerial photo shows bridge at lower right, just to left of road underpass. The bridge is under the east switch going into the Henderson Mine yard. Empty hoppers are on the mine tracks, with the tippie at left center throwing a long dark shadow. Mine buildings are left of the tippie and patch houses are at bottom of picture. The tippie sits about where the current ball field is located.



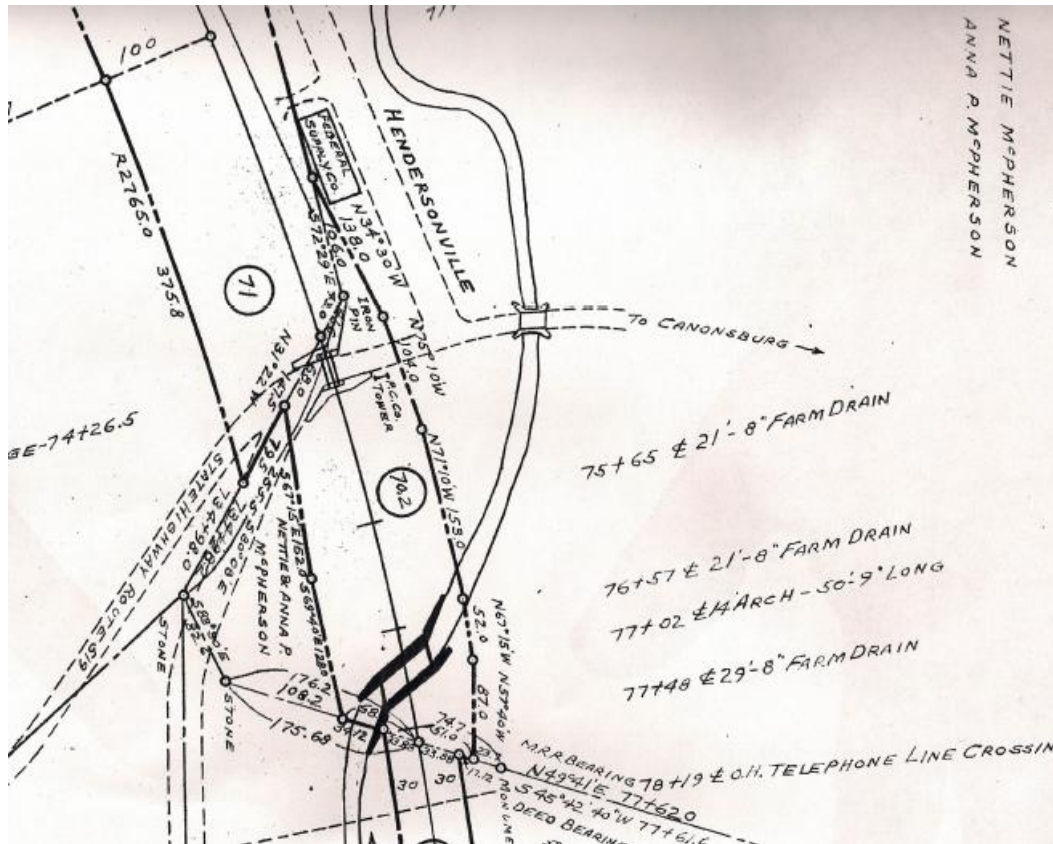
Courtesy Penn Pilot

Topo map shows bridge at center, just above the “M” in BM 998. Morganza Road is in solid red, Dashed red road to left is Cecil-Henderson Road, and dashed red road to right is Georgetown Road. Hendersonville patch houses are at left center.



Google Images / USGS

Valuation plan shows bridge at bottom center, with McPherson Creek flowing under the railroad. At upper left is the Hendersonville Company Store, listed as Federal Supply Co. Road labeled "State Highway Route 519", also indicated "To Canonsburg", is Morganza Road. Road beside "Hendersonville" marking is Georgetown Road and road at bottom left is Cecil-Henderson Road.



Courtesy Greg Corcoran

Compiled by Montour Railroad Historical Society members