

MP 29.2 30' Deck Plate Girder Timber Deck

Mile 28.1 Trail 27.3 Over Morganza Road at Hendersonville

Bridge removed & abutments daylighted 2002

Replaced with 118' I-beam bridge with concrete deck 2012

This view from October, 1980, looks north along Morganza Road. Note telephone pole, fire hydrant and concrete steps from company store on right side of picture.



Gene P. Schaeffer photo

Similar view, from winter of 1953, showing less vegetation in evidence.



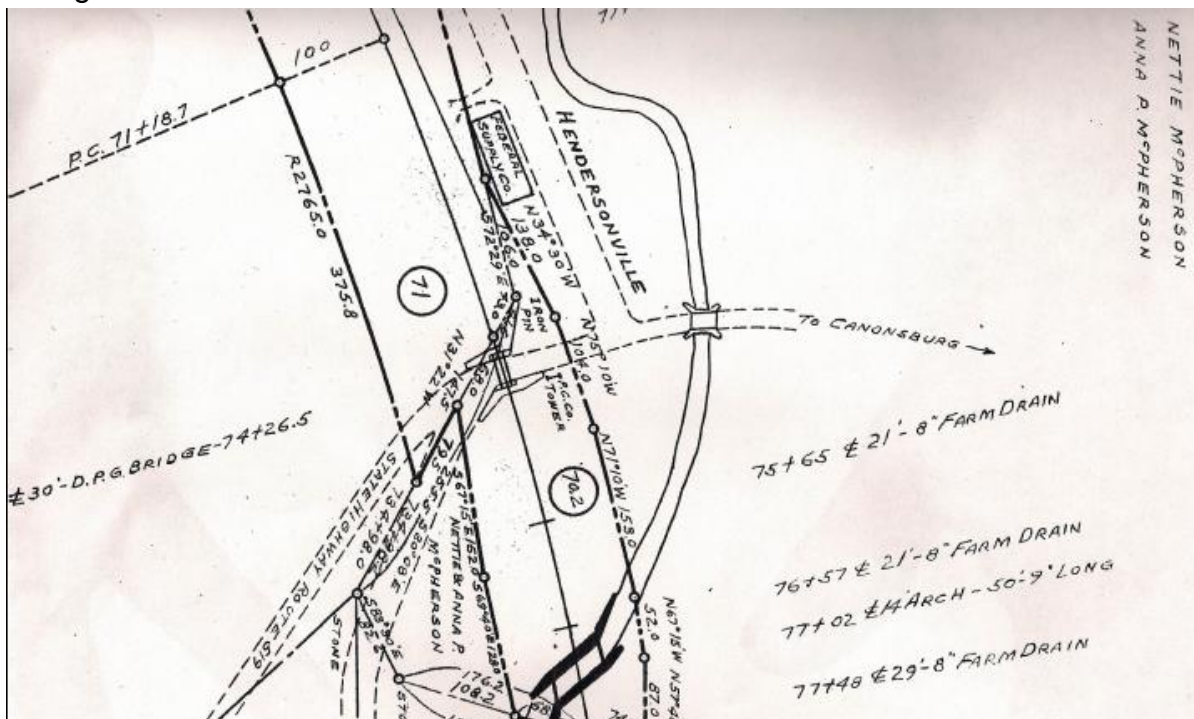
Courtesy Gene P. Schaeffer collection

This view in 2012 shows the new bridge span constructed by the Montour Trail Council. Note the same telephone pole, fire hydrant and steps on the right side. The reconfigured sight lines of the intersection dictated a span of 118 feet to replace the original 30 foot span.



Bryan Seip photo

Valuation plan shows bridge at center, with Hendersonville Company Store, listed as Federal Supply Co., at top center. Road labeled "State Highway route 519", also indicated as "To Canonsburg", is Morganza Road. Road at "Hendersonville" marking is Georgetown Road and road at bottom center is Cecil-Henderson Road. North is to left.

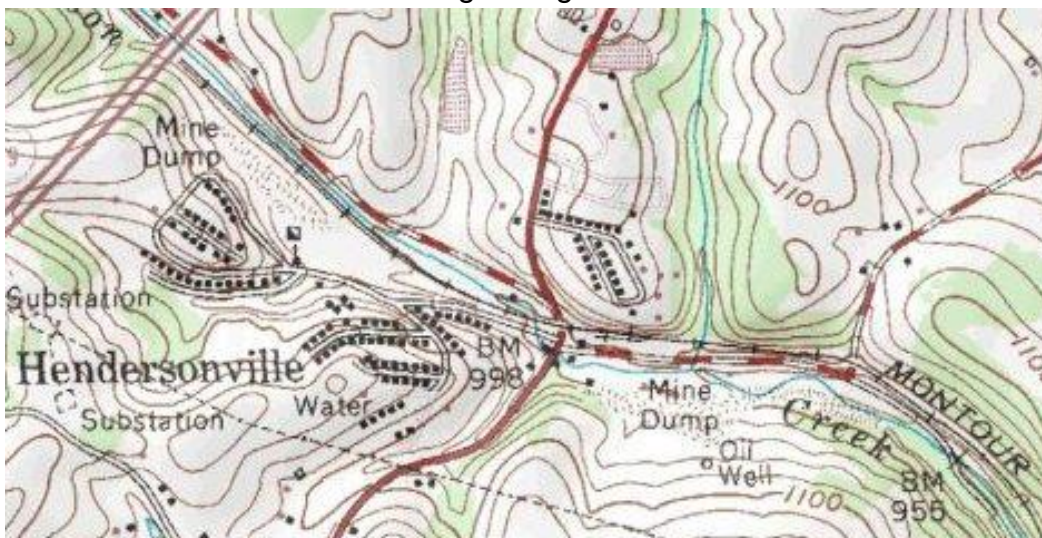


Courtesy Greg Corcoran

Satellite view shows bridge at center. Montour Trail right-of-way approaches from upper left, then continues at center right behind company store building and parking lot. Morganza Road runs top to bottom, with Cecil-Henderson Road at top left Oriole Drive at center left below Trail and Georgetown Road at center right.

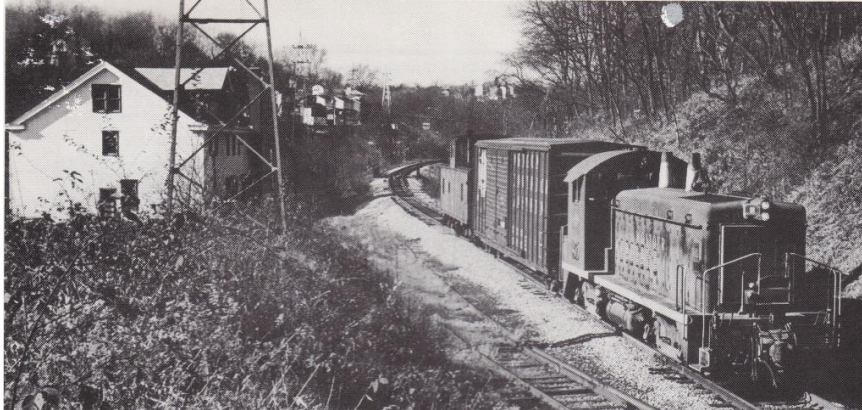


Topo map shows bridge at center, over Morganza Road in solid red. Montour Railroad (Trail) runs top left to bottom right. Hendersonville patch houses and Henderson Mine site are to left of center. Spoil piles in area marked "Mine Dump" in lower right can still be seen behind businesses along Georgetown Road.



Courtesy Bob Ciminel / USGS

This picture from 1980 shows a short train eastbound after crossing the bridge and passing the company store. The bridge can be seen to left of the caboose roofline.



Gene P. Schaeffer photo

The west abutment was removed by PennDOT and daylighted to increase traffic visibility and safety in 1993. The east abutment was removed at a later date. Cecil-Henderson Road is in foreground, with Oriole Drive behind daylighted area. The bridge had been previously removed to provide clearance for truck traffic on Morganza Road.



Looking south

Looking north

Dennis Sims photos



New bridge beams are set in place April, 2012. This span is 118 feet.



Dennis Sims photo

The new bridge is opened in July, 2012, eliminating the detour over local roadways.



Bryan Seip photo

Compiled by Montour Railroad Historical Society members