

**MP 29.5 30' Deck Plate Girder Timber Deck**

**Mile 28.4 Trail MP 27.5 Over Georgetown Road**

Builder's Plate removed Bridge removed 2000 Abutments daylighted 2002

Replaced with 110' I-Beam bridge with concrete deck 2012

Caboose 33 trails empty hoppers eastbound across the bridge in September, 1979.



Gene P. Schaeffer photo

The bridge was knocked off its mounting pads by a boom truck in December, 2000, causing clearance to be reduced to 10 ft. The bridge was removed to open clearance for school busses and emergency equipment. Note 1913 stamped in abutment.



Photo courtesy Montour Trail Council

The bridge was removed and placed beside the Trail right-of-way where it remains as a historic display. Note “10 FT” spray-painted on side of bridge as temporary warning after being knocked off its mountings.



Bryan Seip photo

After the bridge was removed, the Montour Trail Council started work to modify the abutments and replace the bridge, including an increased clearance, but before the project was completed, PennDOT removed and daylighted the abutments to improve sight lines and traffic safety on Georgetown Road at the intersection with Hahn Road.

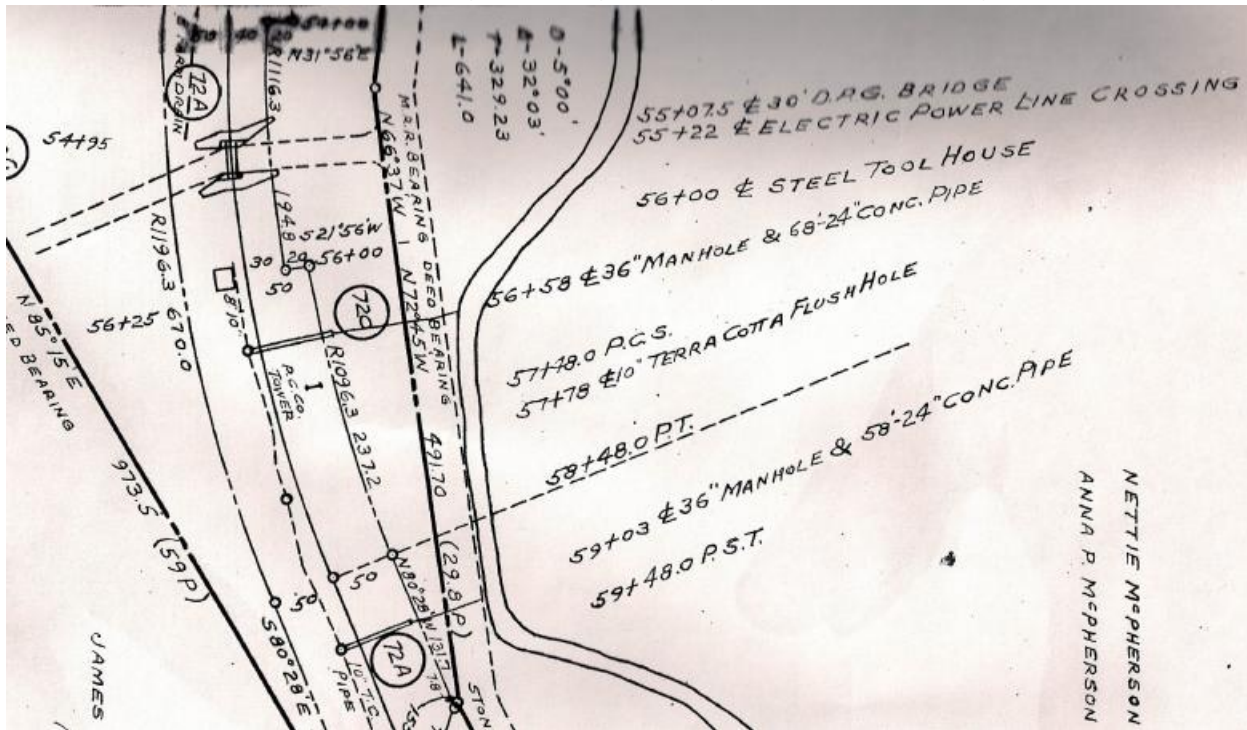
Daylighting of the bridge required a grade level crossing of the Montour Trail at Georgetown Road from 2001 to 2012. The new 110 foot span eliminates the dangerous grade crossing.



Bryan Seip photo



Valuation plan shows bridge at upper left, with Georgetown Road coming downhill from left of frame and making a right turn to bottom of frame. Hahn Road enters from top to intersection with Georgetown Road. McPherson Creek runs top to bottom center of frame. North is at left of diagram. The square below the bridge indicated as steel tool house is at the location of the original bridge sitting beside the Trail right-of-way.



Courtesy Greg Corcoran

This view is looking west across bridge during a 1978 rail replacement project.



Tim Sposato photo

This view is ca. 1994, after abandonment of the railroad and before Trail construction.



Dennis Sims photo

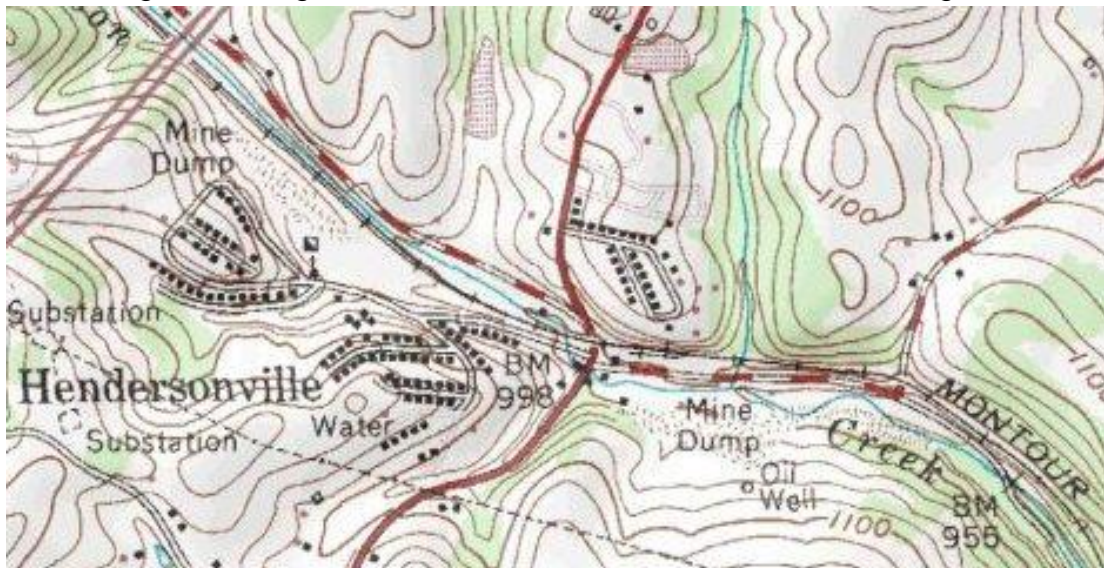
Note the solid planked decking and chain-link fencing on the side railings in the above photos. This was done to catch any chunks of coal falling off of loaded hoppers and keep them from falling onto the roadway traffic below the bridge.



2009 Satellite view shows daylighted bridge site at center. Montour Right-of-Way (Trail) runs left to right above road. Note access ramps from Trail running down embankments to grade level road crossing. Georgetown Road runs from left center, turns corner and goes up hill to top center. Hahn Road runs from intersection to lower right.



Topo map shows bridge location at right center, near "M" in "Montour". Red dashed road on right is Georgetown Road. Solid red road at center is Morganza Road.



Courtesy Bob Ciminel / USGS

Beams for the new bridge are set in April, 2012, and the official opening of the completed bridge taking place in July.



Dennis Sims photo



Bryan Seip photo

Compiled by Montour Railroad Historical Society members