

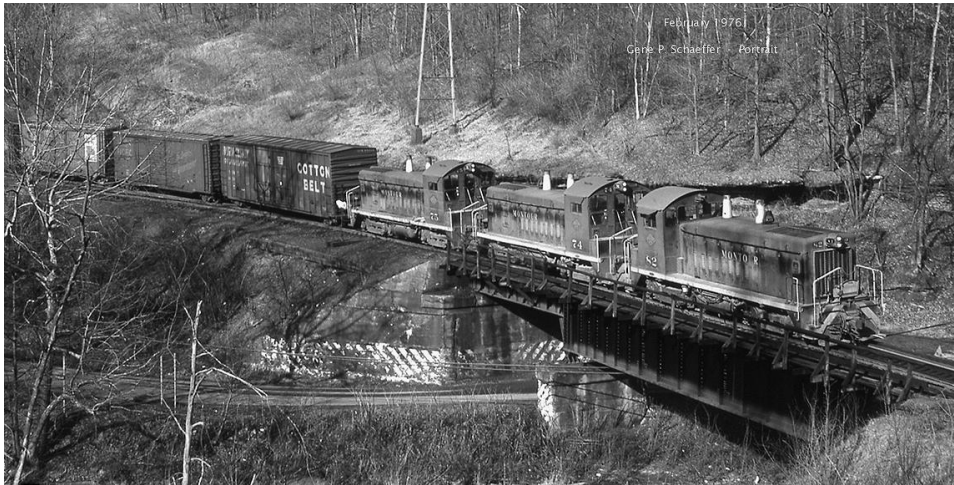
MP 32.3 110' – 30' + 80' Deck Plate Girder Timber Deck

Mile 31.3 Trail MP 30.3 Over Valley Brook Road & Brush Run

Built 1914 - removed in 1986 during realignment of Valley Brook Road

Replaced by Montour Trail bridge VB-2 in 2015

The shorter span was over Valley Brook Road, the longer span over Brush Run.



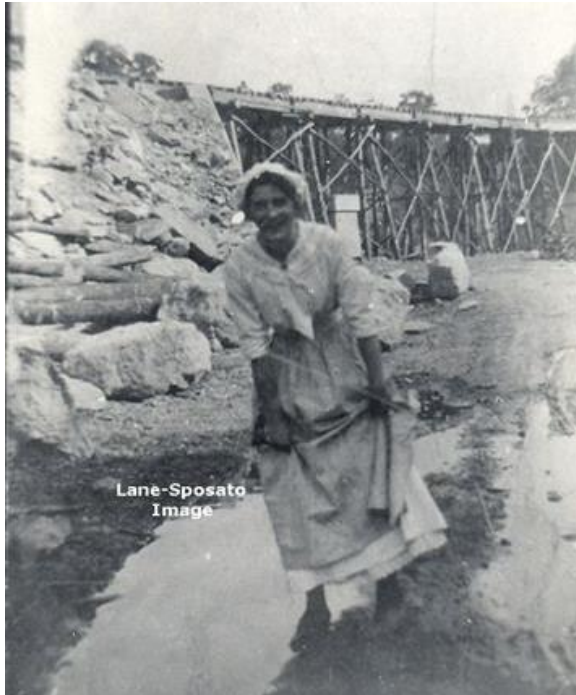
Gene P. Schaeffer photo

This photo was taken during construction in winter of 1913-14, showing concrete abutments and center pier in place. Temporary wood trestle will be replaced by steel spans. The construction camp site will become Montour Mine #4 empty yard.



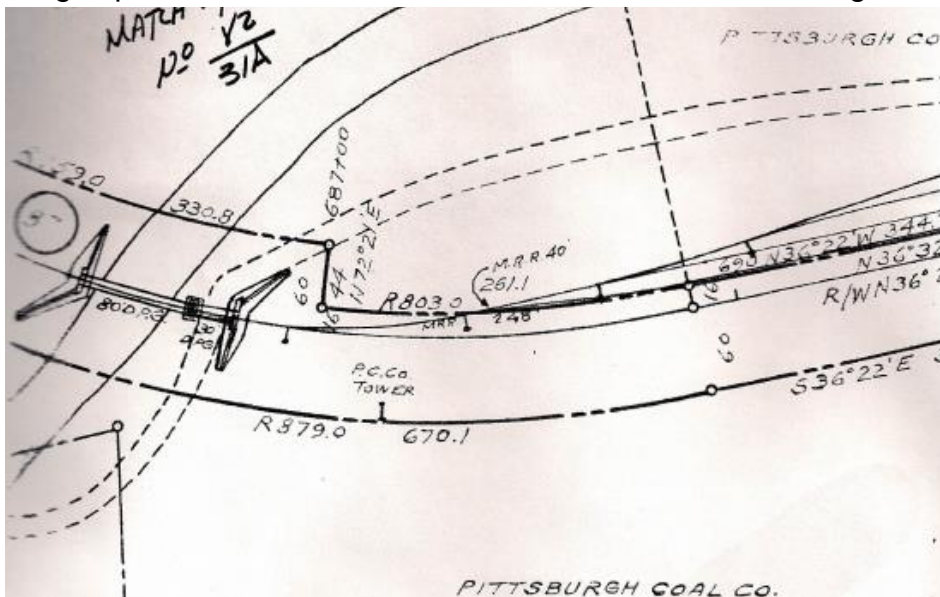
Photo courtesy Dave Richards / Gene P. Schaeffer collection

Another view during construction shows a local resident making her way through the mud of Valley Brook Road. The rock fill and concrete bridge pier are seen behind her.



Tim Sposato collection

Valuation Plan shows bridge with 80' span over Brush Run and 30' over Valley Brook Road, which curved under bridge, then turned back over creek. When Valley Brook Road was realigned in 1986, it was straightened to cross Brush Run where the longer bridge span and left-hand abutment were located, eliminating the sharp "S" curve.



Courtesy Greg Corcoran

View looking west on Valley Brook Road shows shorter span over roadway. Only the right hand abutment remains after realignment of Valley Brook Road.



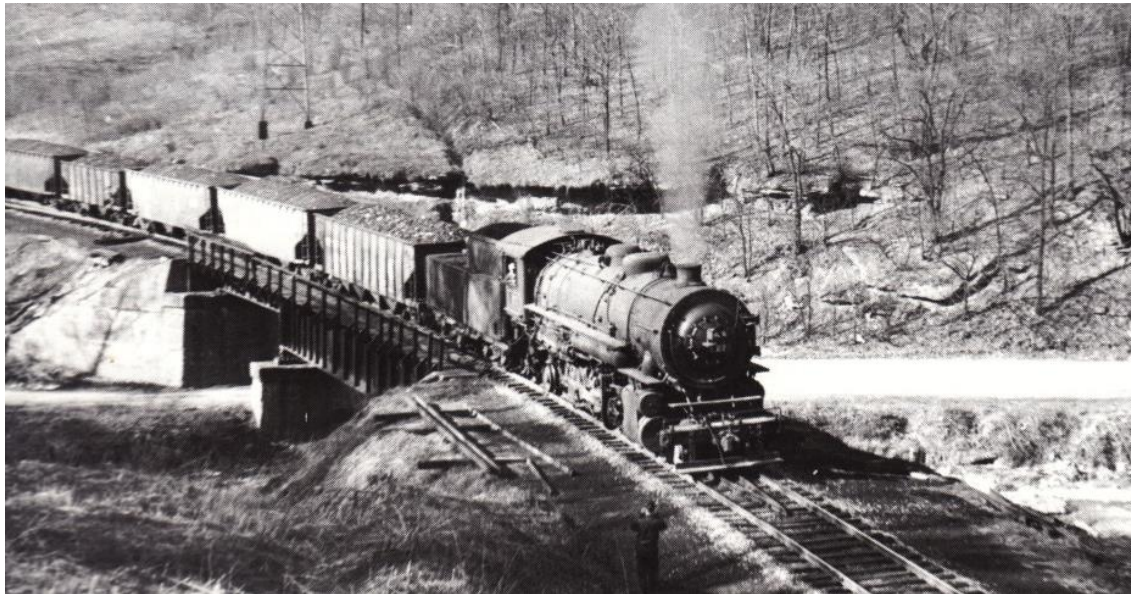
Gene P. Schaeffer photo

2010 picture shows original roadway now used as a Trail parking area. Realigned road continues to left of frame, behind bushes, instead of curving past abutment.



Bryan Seip photo

This view taken in 1952, shows Montour #27 leading a loaded coal train eastbound over the bridge spanning the roadway and creek. Note the young man at bottom, standing beside the tracks with camera in hand, as his father is taking this photo.



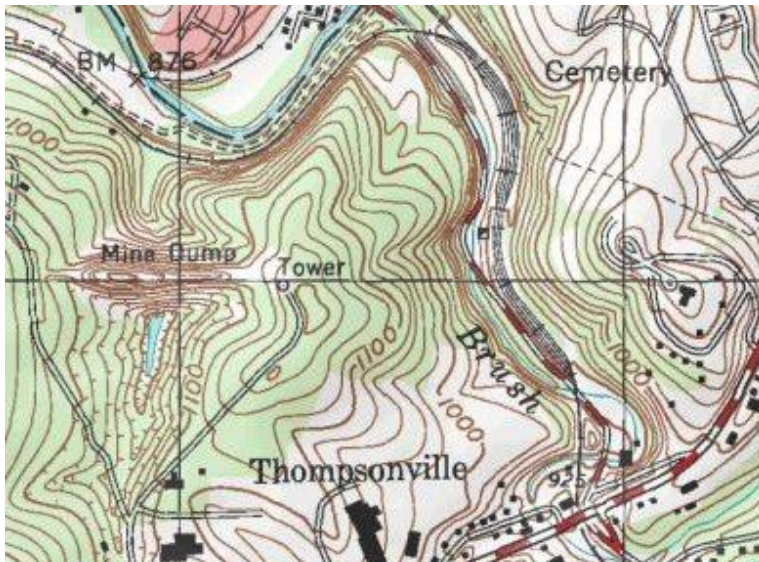
William N. Poellot photo

This photo was taken moments earlier by Bill Poellot, Jr., who was standing beside the tracks in the previous picture. This picture graces the cover of Gene P. Schaeffer's book "The Montour Railroad".



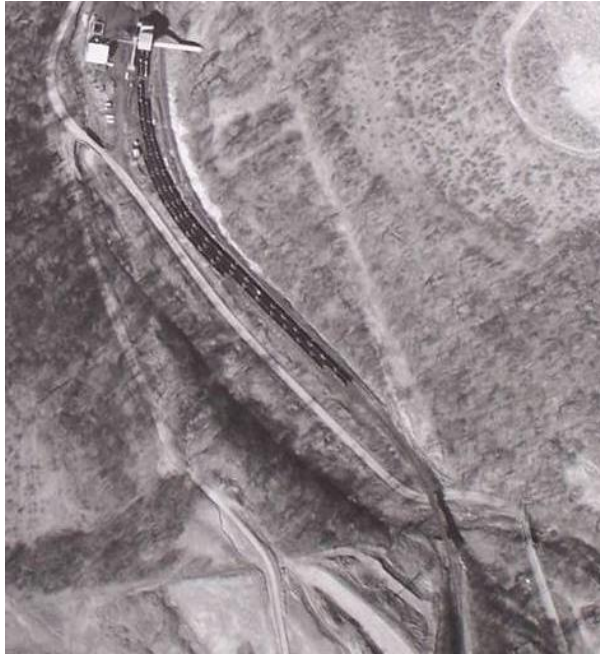
William N. Poellot, Jr. photo

Topo Map shows Mine #4 tracks snaking down the valley beside Brush Run. Valley Brook Road runs top center to lower right, shown as dashed red road, with Rt. 19 in lower right corner. Bridge is at lower end of mine yard, beside "h" in "Brush".



Courtesy Bob Ciminel / USGS

1968 aerial view shows Valley Brook Road as it runs beside #4 empty yard, turns sharply under the bridge in lower right quadrant, and then turns back again to cross Brush Run. This section of railroad was last used in 1980 and the rails were removed in 1981.



Courtesy Penn Pilot

Compare with satellite view, showing the current alignment of Valley Brook Road. Road bridge over creek in lower right quadrant was location of original railroad bridge. The 1986 road realignment eliminated the sharp curves, but also eliminated the abandoned railroad bridge.

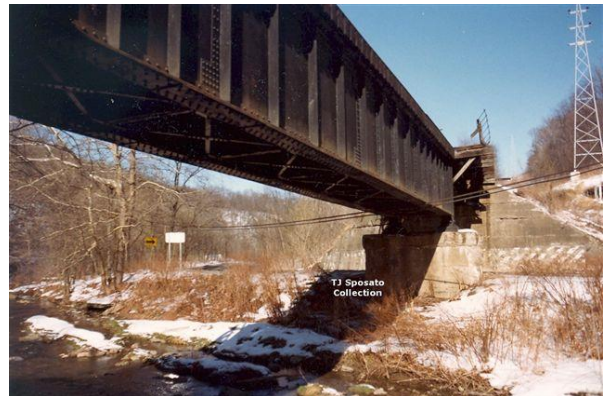


Google Images

Two views of the abandoned bridge before its removal in 1986, looking west toward Mine #4 Empty Yard location.



Tim Sposato photos



In 2013 the bank on the east side of Valley Brook Road was cut down as part of the Trail VB-1 bridge project (at far end of the hillside cut), creating a temporary grade crossing of the roadway at this bridge site. The crossing was used for two years.



In 2015, a new steel beam with concrete deck Trail bridge (VB-2) was constructed to carry the trail over Valley Brook Road, eliminating the grade crossing. The new bridge incorporated the original concrete abutment on the west end of the bridge.



Bryan Seip photos