

MP 32.4 80' Through Plate Girder Timber Deck

Mile 31.4 Trail MP 30.4 Over Brush Run

Built 1914 - Removed late 1980's

Replaced by Montour Trail bridge VB-1 in 2013

Looking east in 1944, with Rt. 19 bridge and Pittsburgh Railways interurban trolley bridge in the background.



Courtesy Gene P. Schaeffer collection

Montour #25 pushes a coal train across the bridge in 1952, with old Rt. 19 bridge in background. Valley Brook Road runs behind trees to left of railroad.



William N. Poellot photo

Bridge being dismantled in late 1980's. Abutment and fill on far side were removed to provide parking area at sanitation plant.



Tim Sposato photo

West abutment is all that remains – viewed from Sanitation Plant parking lot across Brush Run.

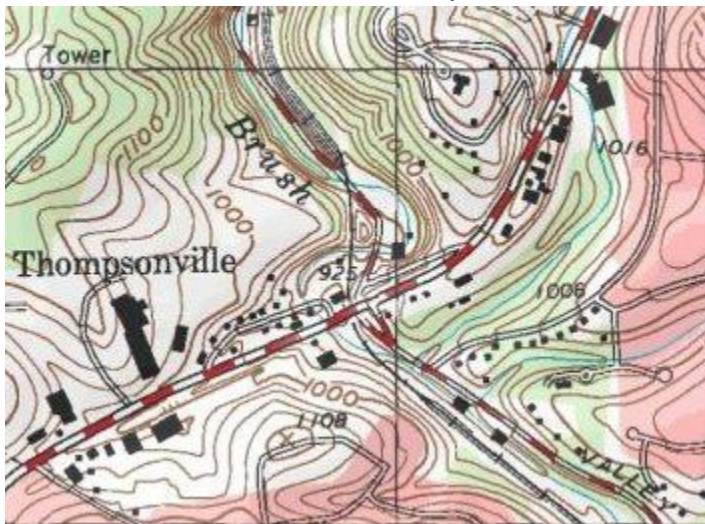


Bryan Seip photo

Satellite view shows site of bridge just above center, at middle of parking area at sanitation plant. Faint trace of right-of-way runs through trees at top center. Rt. 19 is at lower right, with Valley Brook Road from top to bottom. Arrowhead Trail and trailhead parking run alongside of Valley Brook Road at lower center.

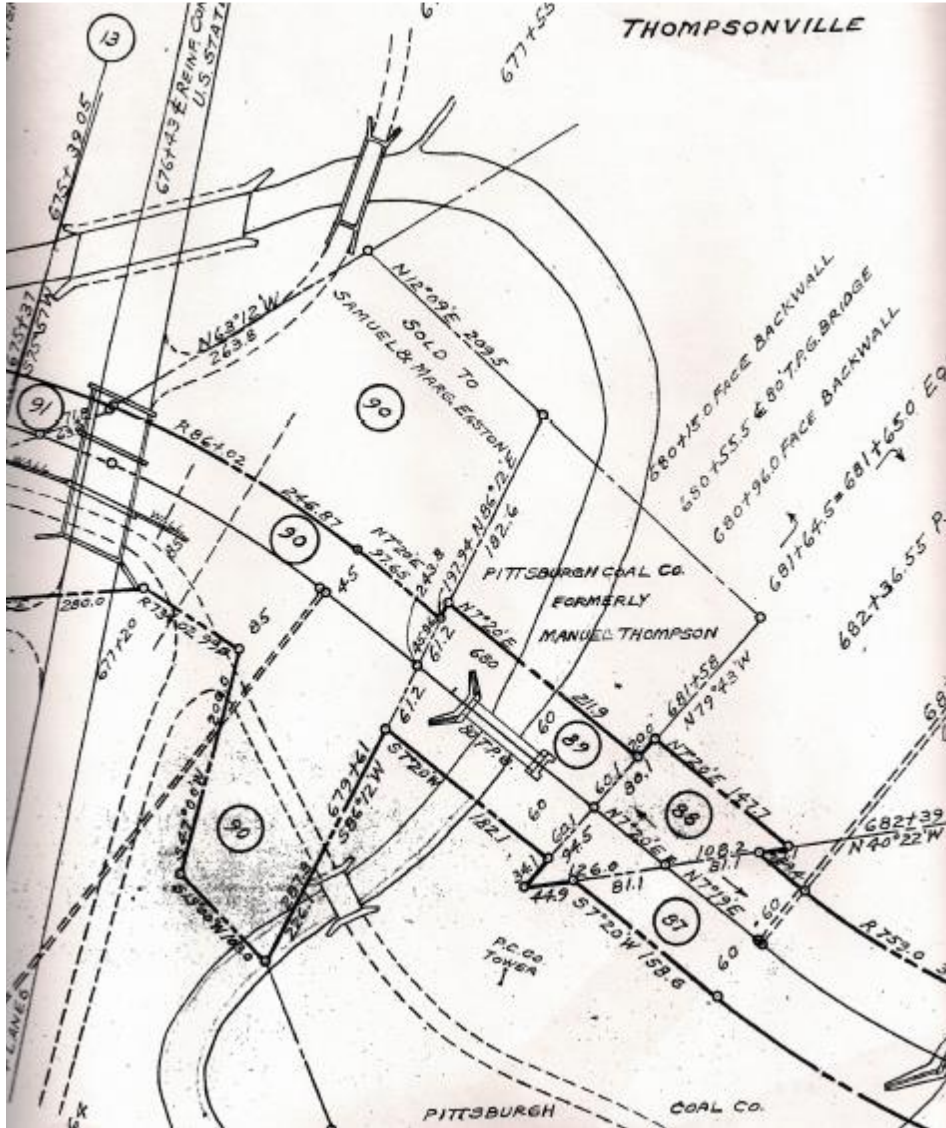


Topo map shows bridge location at center, just above the “5” in the “925” marking. Rt. 19 is red dashed road from lower left to upper right. Valley Brook Road is the thinner red dashed road from top center to lower right.



Courtesy Bob Ciminel / USGS

Valuation plan shows bridge at center. Rt. 19 is at left edge of frame. Valley Brook Road runs left center, under Rt. 19, then crosses Brush Run, to bottom center. Camp Lane intersects with Rt. 19 in upper left and curves over Brush Run to top center, with the old one-room Thompsonville School House just out of the top of frame. North is at bottom of drawing.



Courtesy Greg Corcoran

2013 a new Trail bridge was constructed to eliminate an on-road detour of the Montour Trail. The new bridge was built on an angle from the parking area to the original railroad cut in the hillside above Brush Run.



Bryan Seip Photos

Compiled by Montour Railroad Historical Society members