

**MP 33.1 42' Deck Plate Girder Timber Deck**

**Mile 32.0 Trail MP 31.0 Over Pelipetz Drive in Peters Township**

Built 1913 - Builder's Plate removed

View of north side of bridge – from trail parking area



Bryan Seip photos

View of south side of bridge – looking toward Valley Brook Road. Long wing wall protects bank from small stream flowing under bridge into Brush Run on far side.





The bridge is a double track span, which carried Thompsonville Siding as well as the main line. Engine #80 leads a small train eastbound in November, 1980, one of the final movements on this section of the railroad.



Gene P. Schaefer photo

A similar view, looking west in 2010, shows the bridge with safety railings and wood deck installed by Peters Township on the Arrowhead Trail.



Bryan Seip photo



This view in September, 1983 shows the bridge after abandonment of the railroad. Looking east, weeds have started to take over the right-of-way.



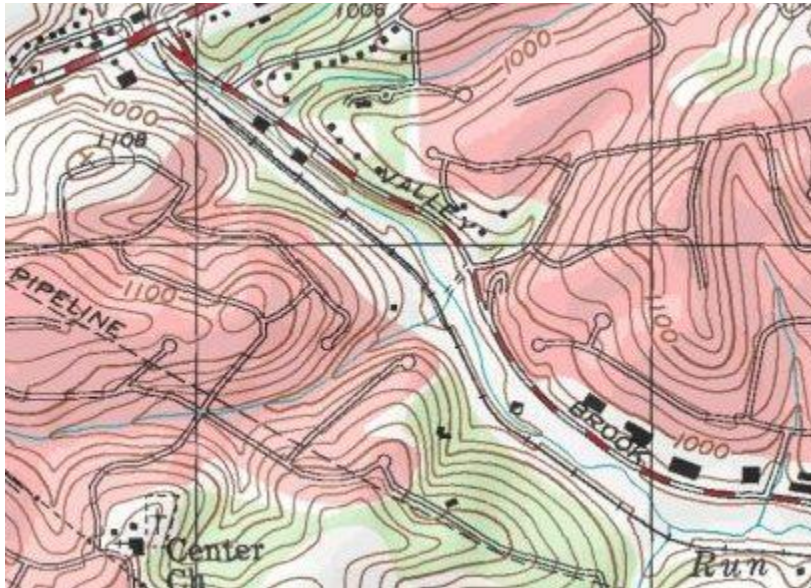
Tim Sposato photo

Peters Township acquired the railroad right-of-way in 1985 and constructed the Arrowhead Trail. Access ramp from parking area is on far right side of bridge.



Bryan Seip photo

Topo map shows the bridge site at center, at the dashed line dirt road indication. This is Pelipetz Drive, near the end of the double track segment. Rt. 19 is the thick dashed red line at upper left, With Valley Brook Road running top left to bottom right.



Courtesy Bob Ciminel / USGS

Satellite view shows bridge at center, with Pelipetz Drive and parking area. Valley Brook Road runs top center to lower right. Maplewood Drive is at top right.

