

MP 34.8 24' Concrete Arch

Mile 33.7 Trail MP 32.8 Over Bebout Road

Builder's date of 1913 in concrete

Daylighted in October, 2011 - replaced by steel beam with concrete deck span in 2012

View looking south from Valley Brook Road intersection. 12' 0" clearance presents problems for large trucks and sight lines from Valley Brook intersection limit view of traffic approaching on Bebout Road. These conditions caused PennDOT to place the arch on their list for removal and replacement.



2011 photos Bryan Seip

View looking north. Valley Brook Road intersection is beyond bridge. 1913 builder's date is over arch.



Looking west across bridge in September, 2011.



Satellite view shows bridge at center. Bebout Road runs top to bottom, with Valley Brook Road running from upper left to intersection at center.



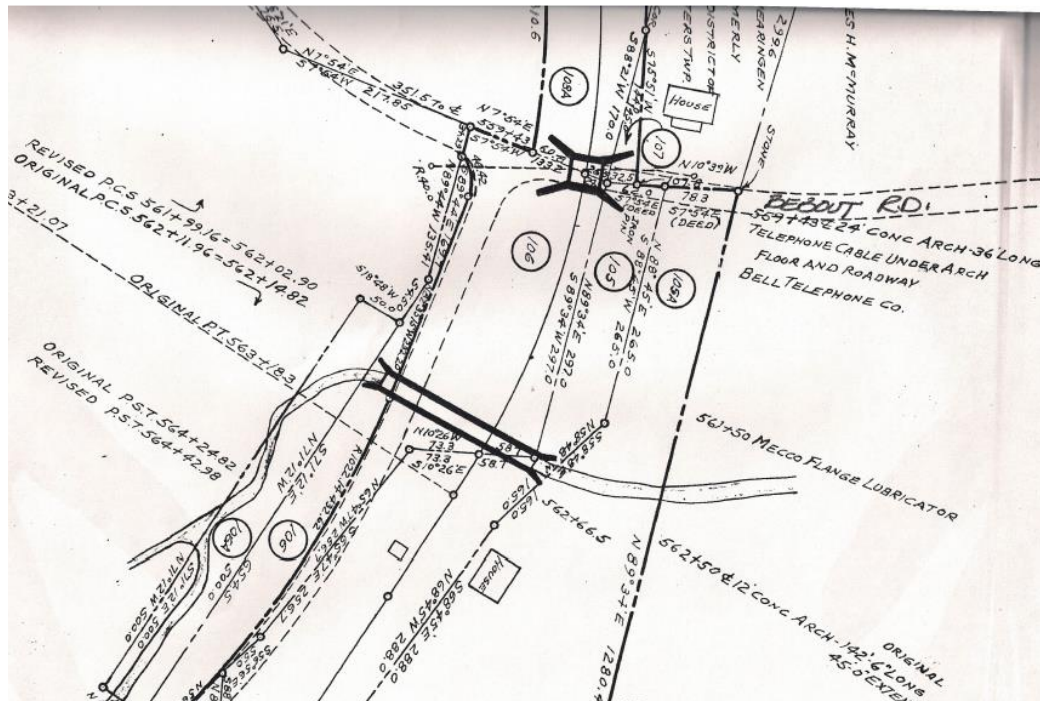
Courtesy Google Images

Similar aerial view from 1958. Driveway below railroad goes to house at left center, owned by the Montour Railroad and used by the Section Gang Foreman. Opposite the house, beside the tracks, is the McMurray Tool House.



Courtesy Penn Pilot

Valuation plan shows bridge at upper center over Bebout Road. Valley Brook Road runs from lower left to upper center at intersection. Brush Run flows under railroad in concrete culvert at center of frame. House at lower center was owned by the Montour Railroad and used by the Section Gang Foreman. The square to left of this house was the McMurray tool house. North is at left of frame.



Courtesy Greg Corcoran

Topo map shows bridge at center. Bebout Road runs top center to bottom right and Valley Brook Road center left to intersection at center at bridge location.



Courtesy Bob Ciminell / USGS

The original concrete arch was removed in 2011.



A new steel beam with concrete deck bridge was built in 2012, increasing clearance and sight lines along Bebout Road.





Bryan Seip photos

Compiled by Montour Railroad Historical Society members