

MP 4.8 54' Deck Plate Girder Timber Deck

Mile 4.5 Trail MP 3.5 1st bridge over Montour Run at Willada

Builder's Plate removed – no dates evident

View looking south. This bridge has no dates evident, but two other bridges built in the same re-alignment project are dated 1920.



2010 photos Bryan Seip

View under bridge – notice abutments & piers for previous bridge in background



Satellite view shows bridge at lower center. Montour Run Road parallels Right-of-Way, with Beaver Grade Road intersection & overpass at top right. YMCA is at top center.



Old abutments on original Right-of-Way carried a 3 span bridge.



1938 view shows the bridge at center of picture. Original Right-of-Way diverges to right above bridge, curves to left following Montour Run and rejoins line at lower left. Montour Run Road has not yet been constructed. Original Beaver Grade Road crossing is at top right.

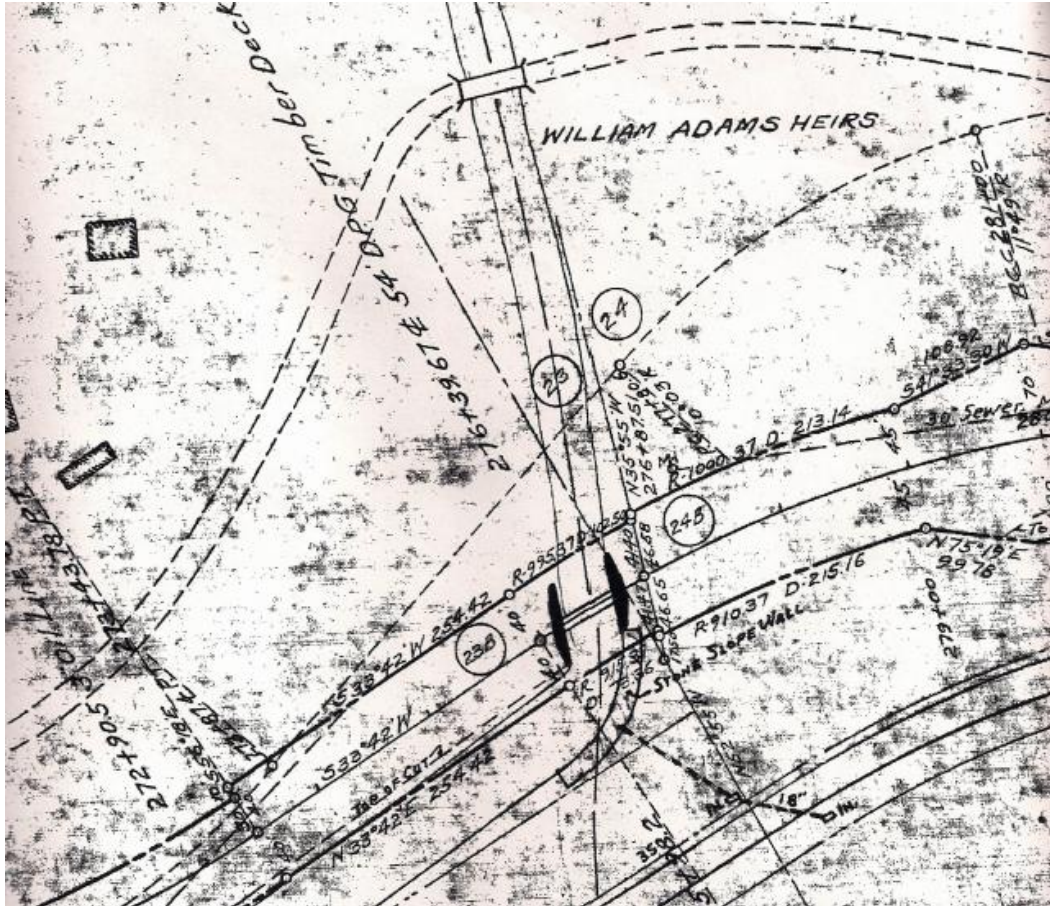


Courtesy Penn Pilot

Another bridge over creek is in the background among trees at top center of picture. This carried the farm road which can be seen to lower right of center in Penn Pilot view.



Valuation Plans show the bridge just below center. The original Right-of-Way is noted by dotted line with bridge crossing the creek at the circle numbered 23. The farm road shows running from lower left to top center to top right with bridge over creek. Montour Run Road runs across lower right corner.



Courtesy Greg Corcoran

Compiled by Montour Railroad Historical Society members