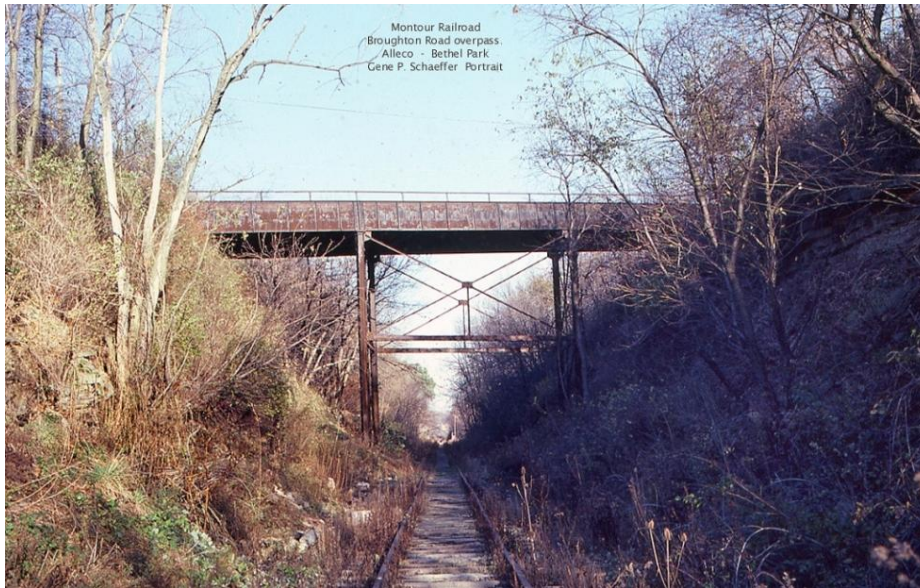


**MP 41.4 115' Through Plate Girder Wooden Deck**

**Mile 40.3 Not on Montour Trail Broughton Road Over Montour Railroad**

Built 1913 Bridge Closed to Traffic 1979 Removed & Cut Filled 1982

View looking east, taken in 1979, upon abandonment of the Montour Railroad. The cut was dug during railroad construction in 1913. The bridge was closed in November, 1979 after being declared unsafe for traffic. In 1982, the cut was filled in, using materials from demolition of 3 concrete arch Montour Railroad bridges in Bethel Park and a new Broughton Road was constructed on top of the new fill.



Gene P. Schaeffer photo

2012 view from Alleco lot shows cut filled in. Broughton Road is at the top of the hill.



2012 photos Bryan Seip

This view looks east from near Hillcrest Shopping Center in 1971, with the cut and bridge in the background. Chain-link fence on left is the Alleco maintenance lot.



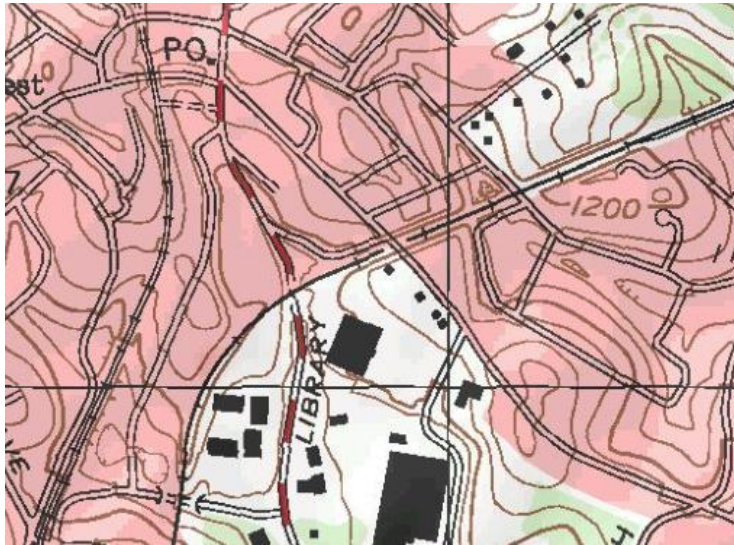
Tim Sposato photo

2012 view, looking west from near Horning Road, shows abandoned right-of-way and filled cut, with Broughton Road crossing at top of fill. Right-of-Way is more evident on this side of Broughton Road.





Topo map shows bridge at center. Note narrow & steep cut at bridge. Broughton Road runs from upper left intersection to lower right. Red dashed road from top to bottom is Rt. 88. Horning Road crossing is to right of bridge site, with Rt. 88 bridge to left.



Courtesy Bob Ciminel / USGS

Pittsburgh Post-Gazette article from July 12, 1930 tells of repairs to be made to bridge.

**BRIDGE REPAIRS  
NOISES TO END**

Montour Railroad Will Fix  
Loose Floor Plate at  
Library

J. M. M., of Library, wrote a letter to Mr. Fixit of The Press and told of a loose floor plate on a railroad bridge that needed immediate attention.

"Several years ago the County resurfaced the Broughton Road which crosses the Montour Railroad tracks near my home," he said. "After the road was resurfaced it left a drop of several inches onto the bridge which caused one of the floor plates to become loose."

"Almost every car that passes over this bridge hits the plate and bangs it so loud that it annoys all of the nearby residents. On Sundays and in the evenings it is almost impossible for persons to sit on their porches and converse with each other. The noise also keeps us from getting our proper rest."

This complaint was presented to President H. J. German of the Montour Railroad Company. "This loose floor plate will be promptly repaired so as to eliminate the noise," he reported.

Compiled by Montour Railroad Historical Society members