

MP 42.1 85' Deck Plate Girder Timber Deck

Mile 41.0 Not on Montour Trail Over P&WV at Longview - Along Baptist Road

Built 1914 Removed 1981

Looking south along now W&LE / ex-N&W / ex-P&WV / nee-West Side Belt tracks, as empty hoppers cross the bridge in December, 1975. The Montour Railroad ceased operations over this section of track in 1976, with official abandonment coming in 1979.



Montour 75-77-78-80 West
N&W Overpass - Salida
December 1, 1975
Gene P. Schaeffer Portrait

Gene P. Schaeffer photo

Bridge during removal in June, 1981. This N&W train was the last to run under the Montour bridge.



Last N&W Train Under Montour
Bridge
June 1981
Gene P. Schaeffer Portrait

Gene P. Schaeffer photo

The bridge is shown in 1979 with Montour Hi-Rail van. Tracks and deck on the passing siding were removed in the 1960's but bridge beams remained until removal in 1981.



Tim Sposato photos

The passing siding girders were removed first, while at bottom, the last girder is cut and removed from the bridge.



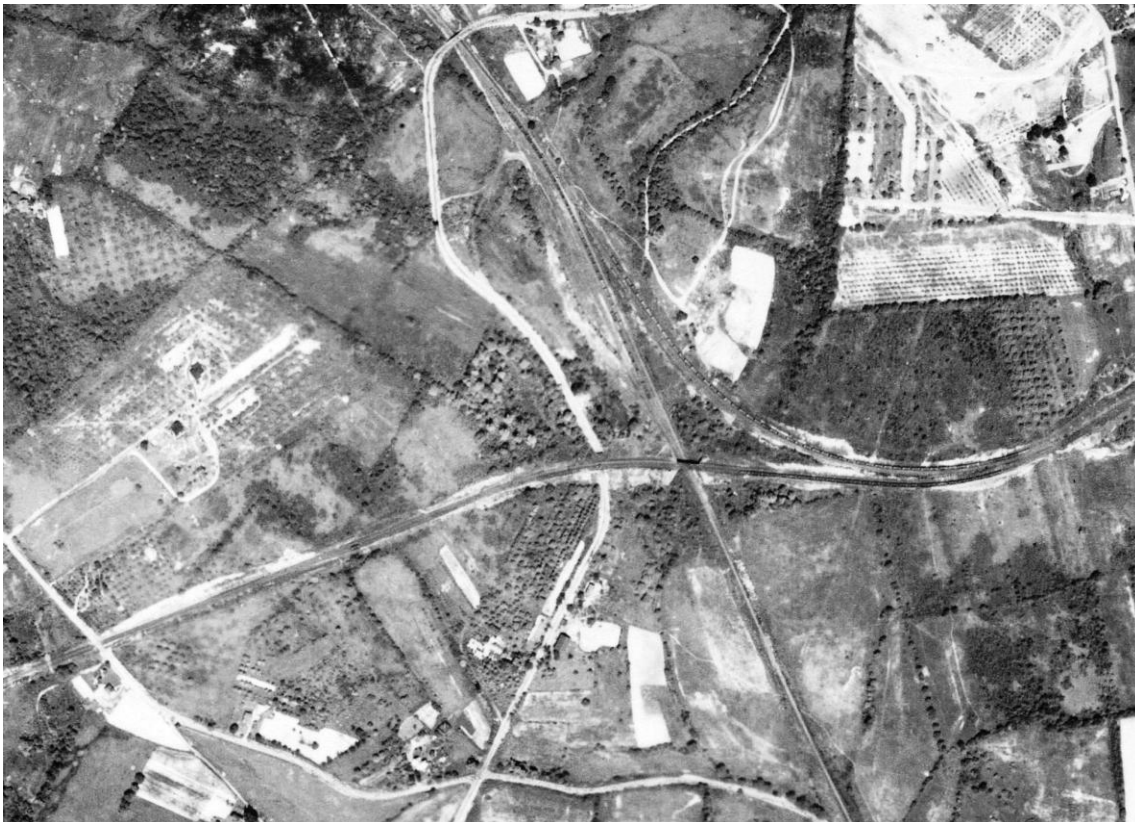
Gene P. Schaeffer photos

Abutments remain in 2012. Fill and right-of-way were removed between west (left) abutment and Baptist Road to clear space for Duke's Station restaurant.



Bryan Seip photo

Aerial view from 1939 shows bridge at center. Baptist Road and current W&LE tracks run top to bottom. Montour RR runs lower left to interchange at center right. Loaded hopper cars sit on siding between the bridge and interchange connection.

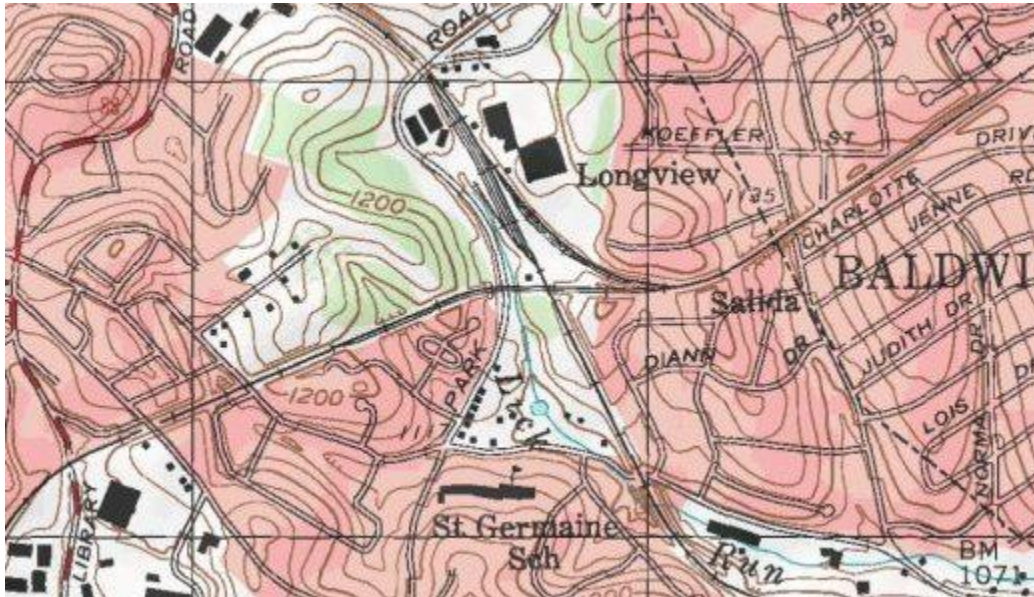


Courtesy Penn Pilot

Satellite view shows bridge location behind restaurant at center of frame. Montour Right-of-Way runs lower left to connection at center right. W&LE tracks run top to bottom at center. Baptist Road curves top to bottom at left of center.



Topo Map shows double-track bridge at crossing of two railroads in center of frame. Passing siding was removed in early 1960's. Montour Railroad runs from lower left to Interchange connection with P&WV at right of center, then continues east to Mifflin Junction over trackage rights granted by P&WV.



Courtesy Bob Ciminell / USGS

Compiled by Montour Railroad Historical Society members