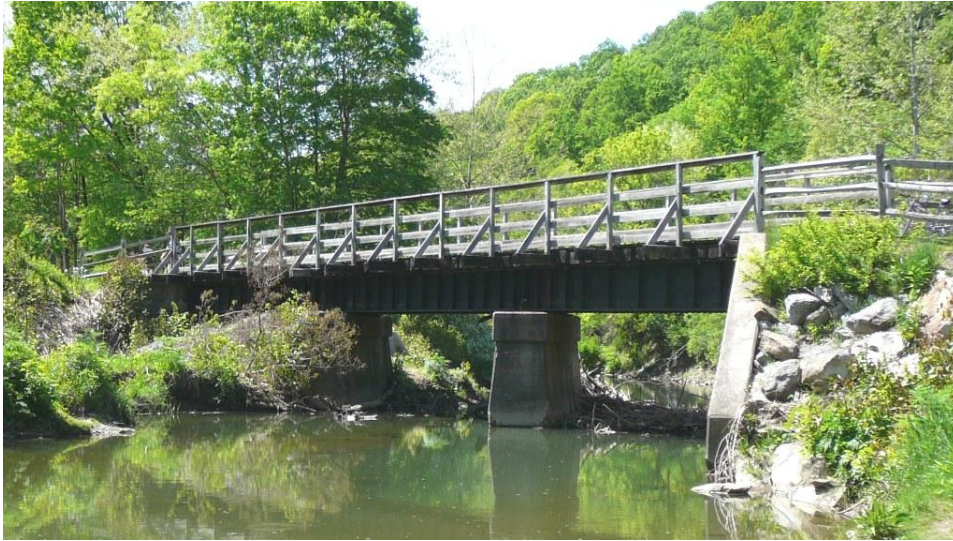


MP 5.0 90' Deck Plate Girder 3 Spans – 33' 3" + 30' + 26' 9" Timber Deck

Mile 4.7 Trail MP 3.7 2nd bridge over Montour Run at Willada

No Builder's Plate evident Bridge reused from original 1879 main line at MP 4.8

View looking north toward Montour Run Road. 3 spans with 2 concrete piers in Montour Run.

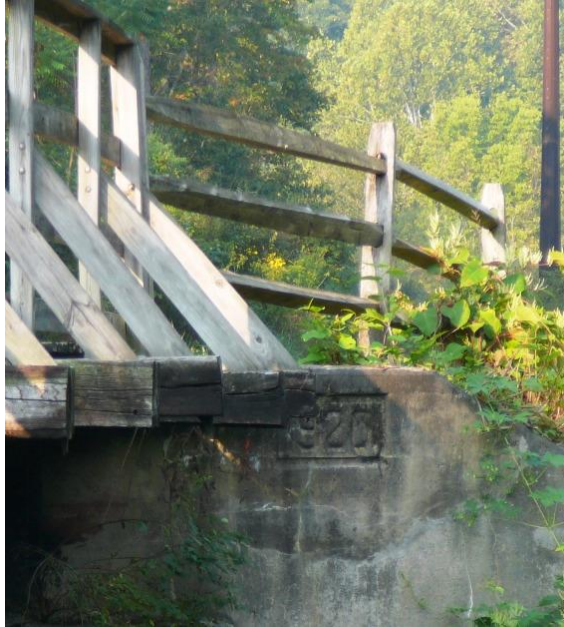


2010 photos Bryan Seip

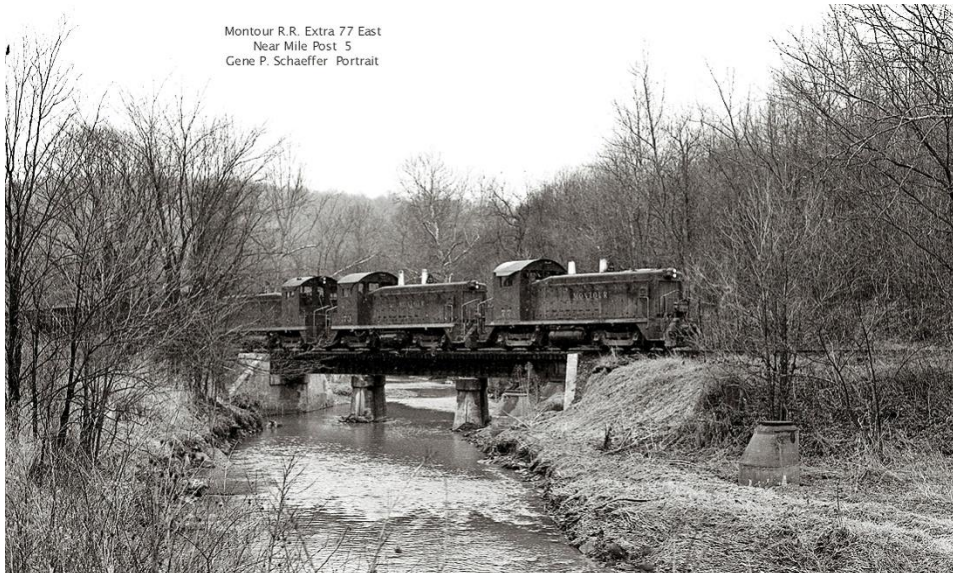
Looking south. Safety railings and fencing were installed by Montour Trail Council during trail construction.



1920 date stamped in concrete abutment. This bridge was reused from the original main line and moved as part of the 1920 realignment project. The bridge was built circa. 1879, on the original Montour Right-of-Way. On Right, the original bridge piers can be seen south of the current bridge at MP 4.8 (Trail milepost 3.5)



Looking south, as a Montour train of empty coal hoppers crosses the bridge.



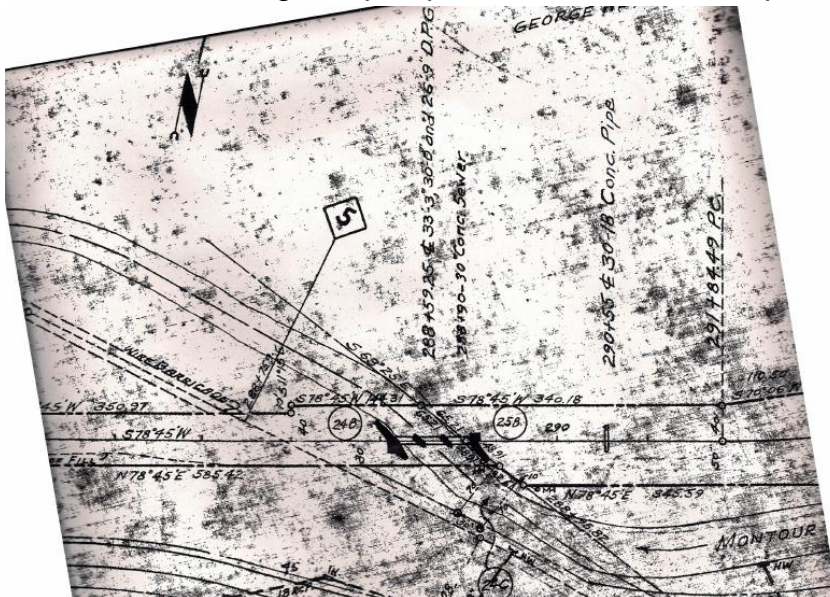
Gene P. Schaeffer photo

Satellite view shows bridge above and right of center. Montour Run Road runs across frame, with Hookstown Road intersection at left and Costco at bottom right. Montour Run channel was relocated during road construction. In upper left quadrant, the original channel went across roadway at intersection of Hookstown Road and looped around field on opposite side of road, re-crossing road to bridge. Montour Run flows left to right.



Google Maps

Valuation Plans show bridge with concrete abutments and 2 concrete piers in middle of Montour Run. Length of 3 spans noted at top center. Montour Run Road is at bottom left, with south being at top of plan. Note railroad milepost 5 is shown to left of bridge.



Courtesy Greg Corcoran

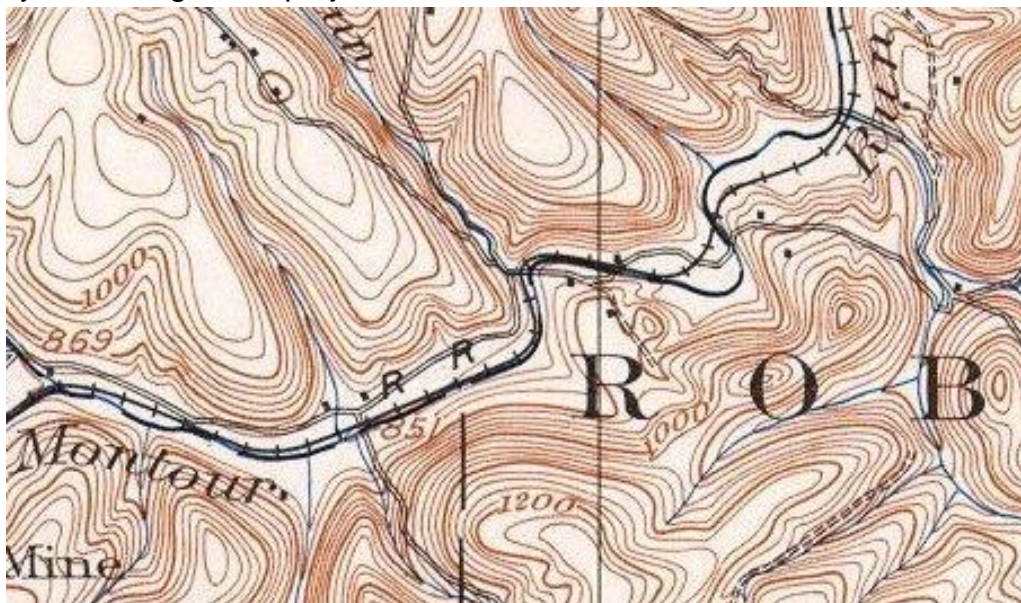
Aerial view in 1938 shows original alignment of main line and realignment including 3 new bridges.

Original Right-of-Way diverges at top right, near farm road – then curves to follow Montour Run along loop at left of center and rejoins Right-of-Way at bottom left. This bridge, the 2nd of 3 in this realignment project, is just below & left of center of picture.



Courtesy Penn Pilot

This older topo shows the original railroad alignment crossing, then following, Montour Run. In the center, just above the big “R” are the 2 sharp curves that were eliminated by the re-alignment project in 1920.



Courtesy Bob Ciminel

Old abutment about 100 feet northeast from bridge could have been farm road as seen in 1938 aerial view and following picture.



View from 1961, looking RR east, shows bridge before construction of Montour Run Road, which eliminated the road and house on the right side of the picture. Right end of pony truss road bridge is where concrete abutment still exists.



County of Allegheny - Gene P. Schaeffer Collection