

**MP 8.3 40' Concrete Slab 2 – 20' spans Concrete Deck**

**Mile 7.6 Trail MP 6.7 Over Montour Run at Jeffreytown**

Between Cliff Mine Road & Jeffreytown Tunnel

Both views looking south – abutment at right end has 1926 date



2010 photos Bryan Seip

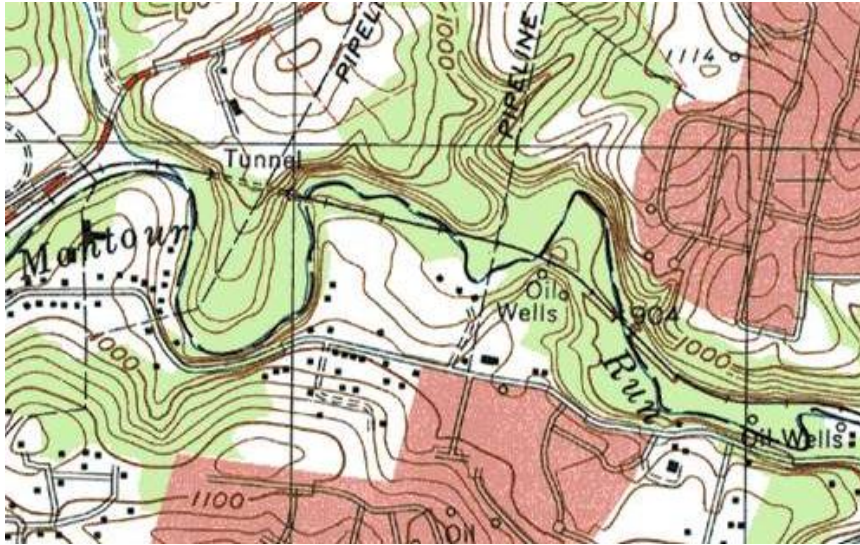
1926 in concrete abutment



Looking east (RR West) – cut through hillside on far side of bridge is seen on topo map. Railings and fence were installed for Trail use. The railroad had no side railings on this bridge.

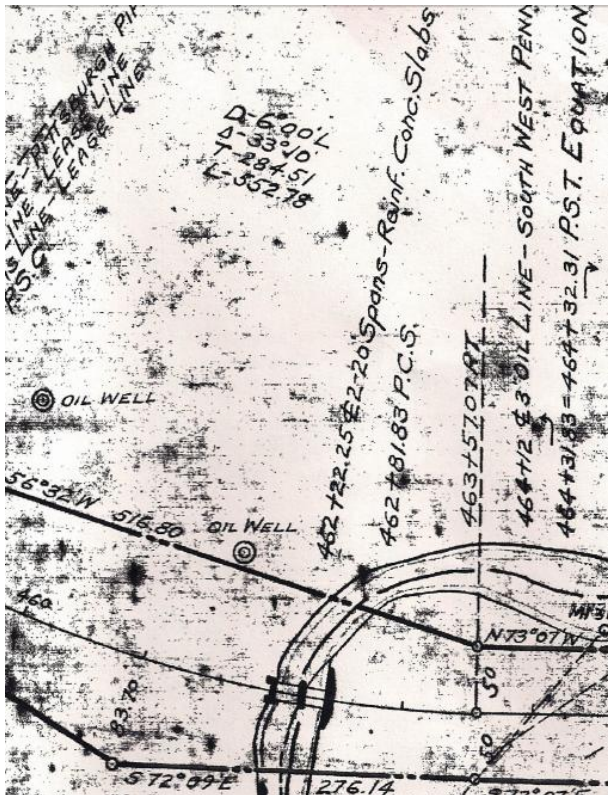


Topo map shows bridge to right of center, just above words "Oil Wells" with cut through hillside.



Courtesy Bob Ciminel

Valuation plan shows bridge with pier in middle of Montour Run



Courtesy Greg Corcoran

Compiled by Montour Railroad Historical Society members