

MP 8.4 54' Through Plate Girder Concrete Deck

Mile 7.8 Trail MP 6.9 Over Montour Run at Jeffreytown

Between Cliff Mine Road & Jeffreytown Tunnel

Builder's Plate: Built by McClintic-Marshall Company Pittsburgh, PA 1926

1926 in concrete abutment

Looking east (RR West) – Skew construction evident in this view



2010 photos Bryan Seip

Looking south



Looking west (RR East) at north side of bridge – builders plate on near end



Builder's Plate:
Built by McClintic-Marshall Company
Pittsburgh, PA 1926



Seen in 1981, bridge is about half-way along westbound train, where plate girder can be seen to the right of the train. Jeffreytown (Enlow) tunnel is in the background. Original right-of-way comes in at right beside 3rd coal car.

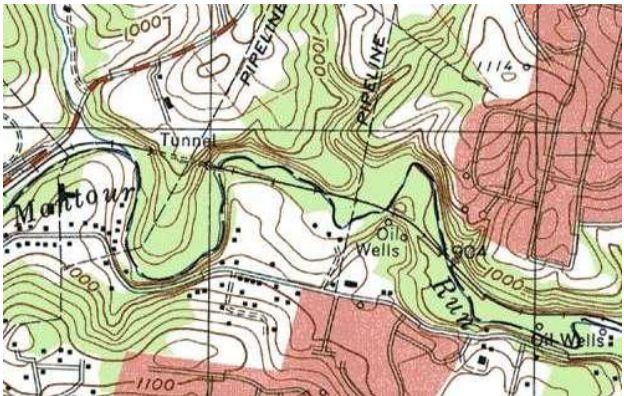


Gene P. Schaeffer photo

Old abutment from original Right-of-Way just south of bridge along creek.



Topo map shows bridge at center of map.



This map shows original right-of-way following Montour Run. Note this 1905 map lists Jeffreytown area as McMinn.

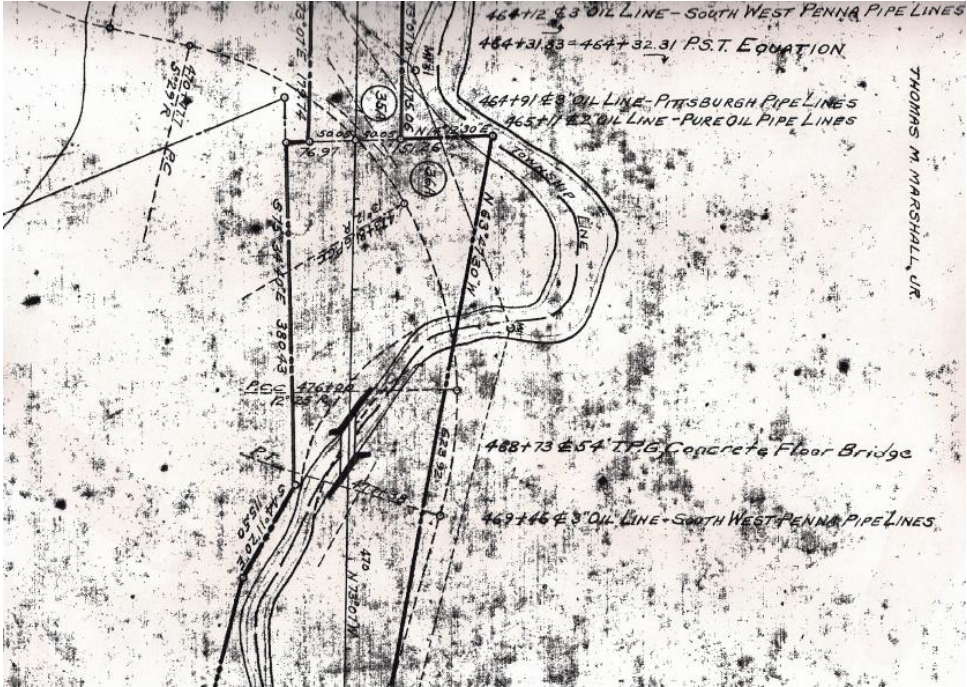
Courtesy Bob Ciminell

1938 aerial photo shows realignment of railroad. This bridge is near center of photo. Original right-of-way loops around creek at top right and also follows creek around hill at left side. Realignment eliminated these sharp curves. Cliff Mine Road runs at bottom.



Penn Pilot photo

Valuation plan shows skew construction of bridge abutments as the bridge crosses Montour Run on an angle. Dashed line curving from top left to bottom center shows original right-of-way. The sharp curve was eliminated by 1926 realignment.



Courtesy Greg Corcoran

Compiled by Montour Railroad Historical Society members