

**Montour Junction Engine House Track 57' Deck Plate Girder Timber Deck
Over Montour Run**

Carried lead track to Engine House & Shops over Montour Run – Bridge Removed



Gene P. Schaeffer Photo

Circa 1950, looking southwest with Rt. 51 in background and shops behind
photographer.



Gene P. Schaeffer Collection

December, 1980



Gene P. Schaeffer Photo

This satellite view shows Engine House and Shops foundations. The bridges leading into the shops have been removed. Rt. 51 at left of picture, P&LE (now CSX) tracks at upper right. At lower left, between Rt. 51 and Montour Run, the pit for the scales can be seen in the yard tracks right-of-way running parallel to Rt. 51.

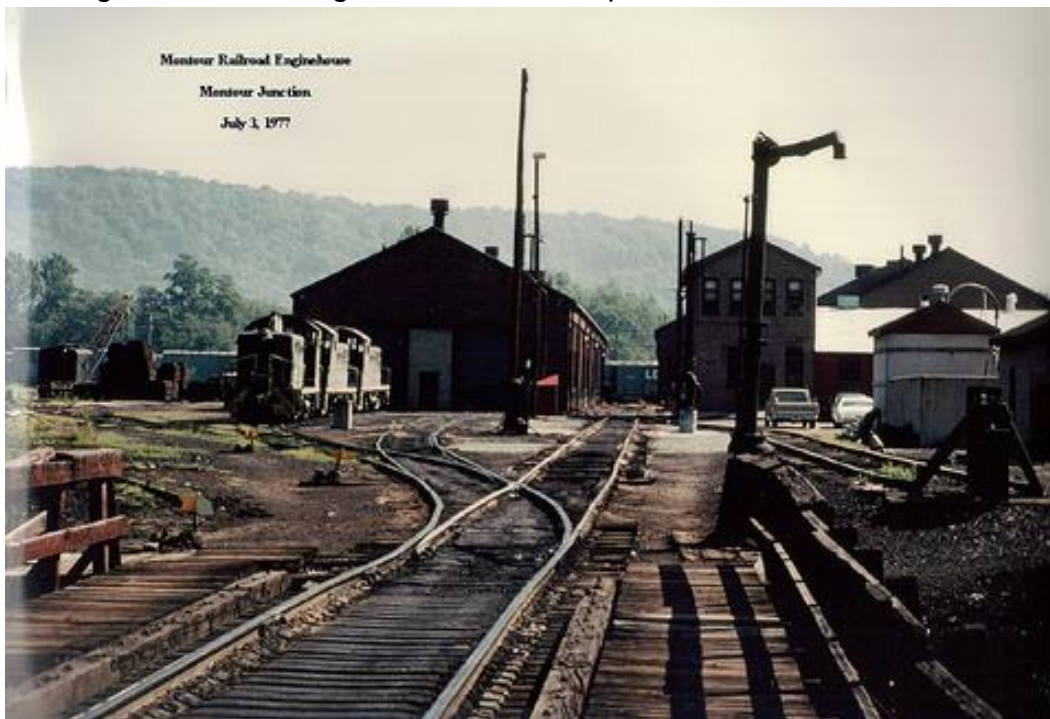


January, 1981, view looking from the Shops toward the yard tracks and Rt. 51. The cabooses are on the lead over the adjacent Car Yard bridge.



Gene P. Schaeffer Photo

Looking across the bridge towards the Shops in 1977.



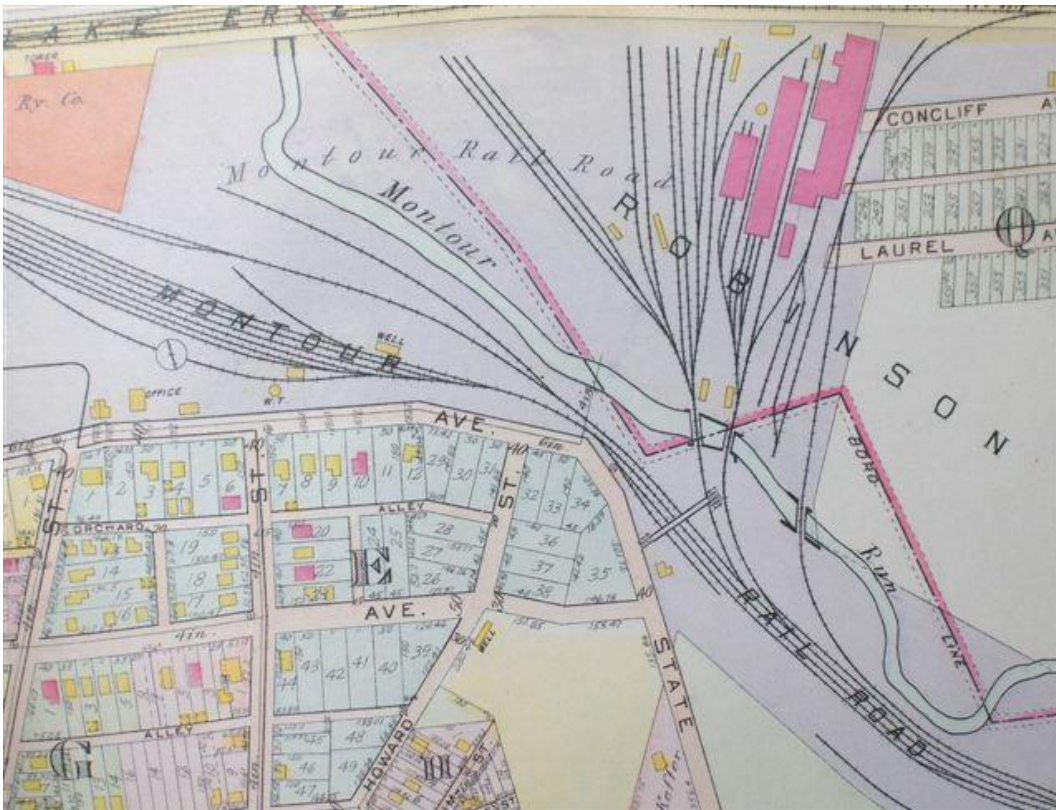
Don Krater Collection - Courtesy Gene P. Schaeffer

This aerial view shows the bridge leading to the Engine House is the middle of the 3 bridges. Steam locomotives are sitting in front of the shops on June 27, 1946.



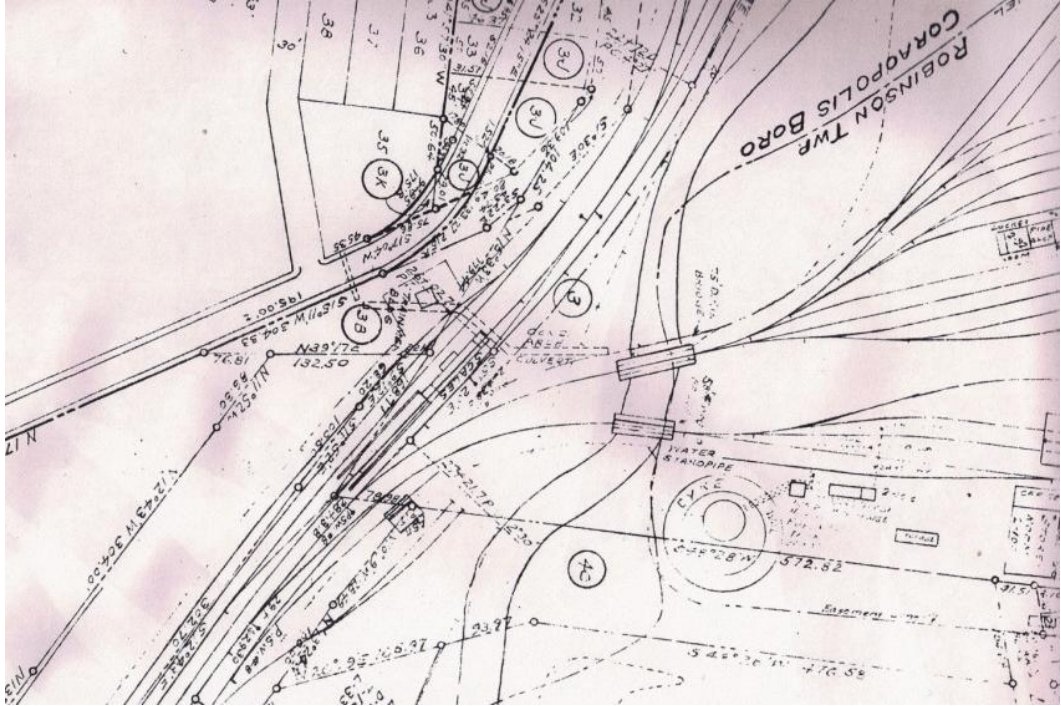
Pittsburgh & Lake Erie Railroad Company photo

This map shows three bridges over Montour Run in front of the Shops. The Engine House bridge was the middle of these three.



From digital.library.pitt.edu/pittsburgh - Courtesy Bob Ciminel

Valuation Plan shows lower of 2 bridges as Engine House Bridge, noted as 57 foot Deck Plate Girder.



Courtesy Greg Corcoran

Complied by Montour Railroad Historical Society members