

Westland MP 2.9 24' Concrete Slab

Built in 1927 Over farm road along Hornhead Road

View from Hornhead Road.



2011 photos Bryan Seip

View looking east shows how bridge provided access into farm fields on opposite side of railroad. Note cracks in abutments from soil pushing against concrete. Timber bracing was applied under bridge slab to hold abutments in place.

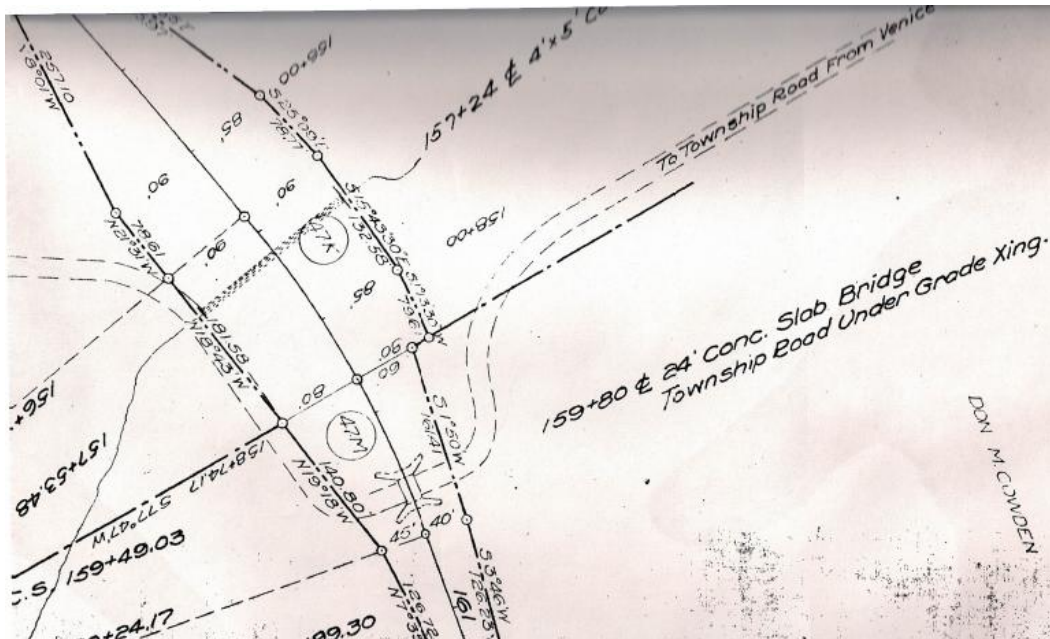


Aerial view from 1958 shows the farm road running from Hornhead Road at left, under bridge and into farm lands on east side of railroad.



Courtesy Penn Pilot

Valuation plan shows concrete slab bridge with township road crossing under railroad and continuing at upper right towards Venice.



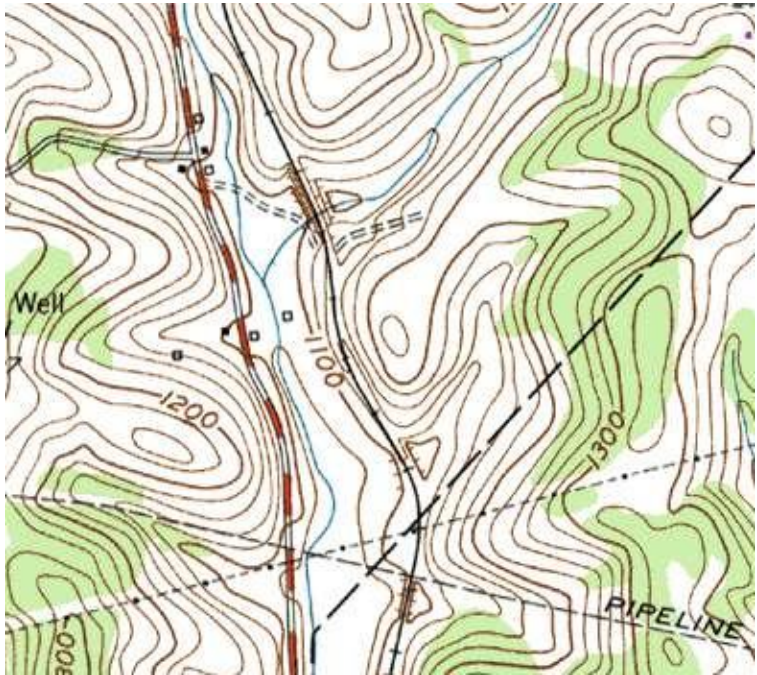
Courtesy Greg Corcoran

Satellite view shows bridge at center of frame, at small break in tree line. Railroad right-of-way runs top to bottom at center, with Hornhead Road parallel to left. Farm road runs past house and under railroad, along tree line, into fields on east side of railroad.



Google Images 2011

Topo map shows bridge near center, where dashed township dirt road crosses railroad. Hornhead Road runs top to bottom at left. Power line and pipeline cross railroad at bottom center.



Courtesy Bob Ciminel