

Enlow Tunnel

This tunnel was bored through the hillside in 1926 during a realignment project by the Montour Railroad to eliminate several troublesome curves in the railroad's original main line.

The 575 foot tunnel eliminated a half-mile of track which followed Montour Run around the hill. This was the only tunnel on the Montour with a straight bore.



This view from a caboose cupola shows a set of eastbound Montour locomotives entering the tunnel in 1978.

Roy E. Parkinson photo courtesy Gene P. Schaeffer collection

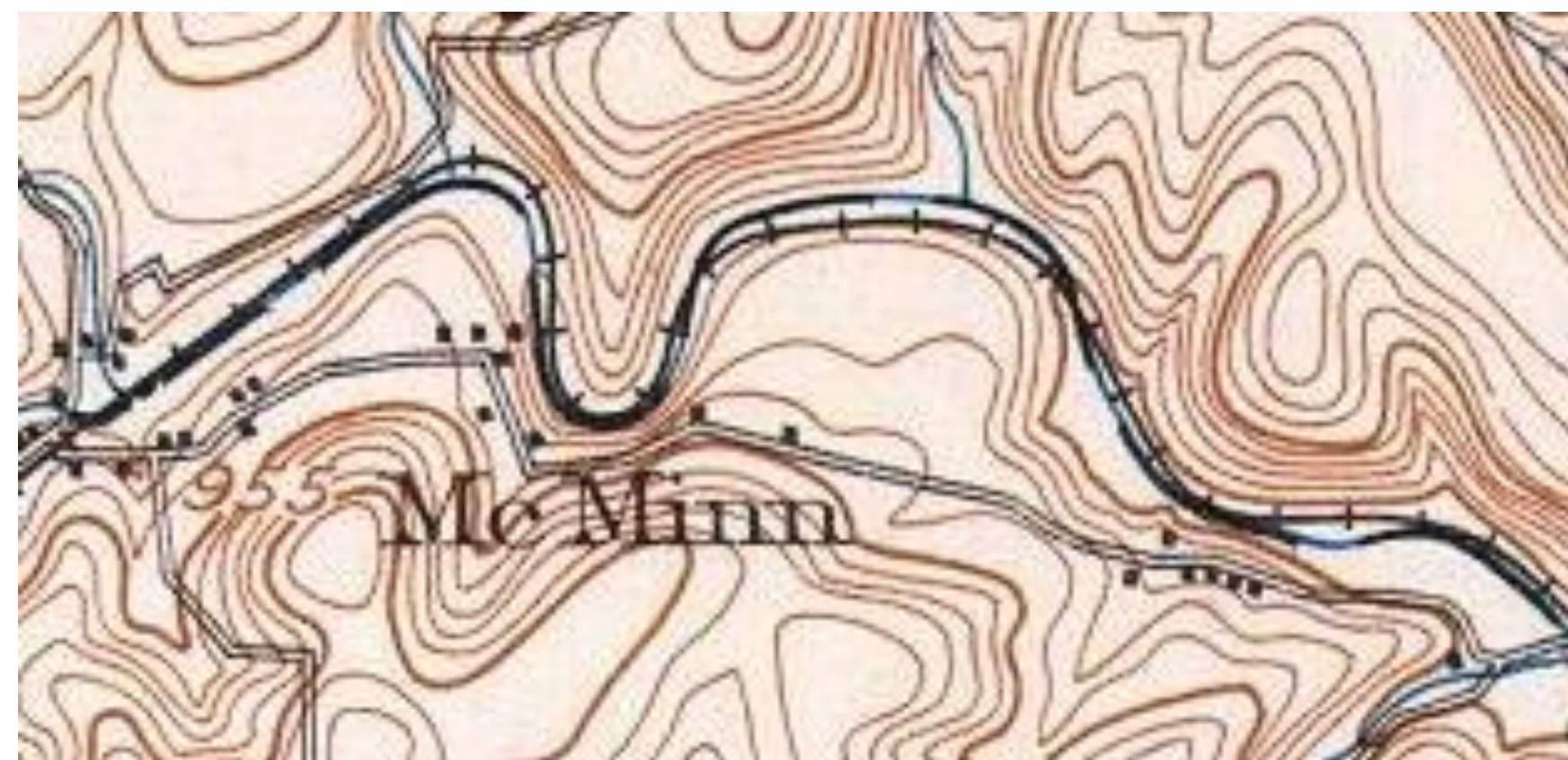


A westbound Montour coal train trails a cloud of exhaust smoke as it exits the tunnel and crosses the first of several bridges over Montour Run.
Gene P. Schaeffer photo.

Stone bridge abutments from the original main line can be seen on the creek bank from nearby trail bridges.

The tunnel was known by the railroad as Jeffreytown Tunnel, named for the community adjacent to this site.

The trail safety lighting was added by Findlay Township.



A 1905 topographic map shows the original Montour main line curving around the hill at McMinn, following the Montour Run creek bed. This tunnel eliminated the horseshoe shaped curve around the hillside.

Map courtesy Bob Ciminell/USGS



For more information go to: montourrr.com